



CALIFORNIA

Peak Seasons
7240 Sycamore Canyon Bl.
Riverside, CA 92508
1.800.858.8733

WISCONSIN

27 State Road 21/73
Wautoma, WI 54982
1.800.858.8733

GEORGIA

Veldsma & Sons
160 Andrew Dr. Ste 100
Stockbridge, GA 30281
1.800.458.7919

CHECK THE
CLOSEOUT DEALS
PAGE AT
WWW.PEAKSEASONS.STORE
FOR THE BEST PRICES

YOUR CHRISTMAS TREE LOT SUPPLIER 2024 CATALOG

RETAIL ITEMS • FLOCK & FLOCK MACHINES • FLAME RETARDANT • LOT SUPPLIES
BALERS & NETTING • TREE REMOVAL BAGS • TREE COLORANT & NEEDLEBOND
WREATH RINGS & EMBELLISHMENTS • BOWS & RIBBONS • SALES CONTROL TAGS
BANNERS & PENNANTS • WOOD & REBAR STANDS • WATER BOWLS



PeakSeasons.store
800.858.8733

Veldsma & Sons
800.458.7919

Tim Mitchell's
Yule Stand
800.394.6536

GUIDELINES

YOUR BEST CHOICE

Products listed will have an "icon" in front of the part number. The icon designates where the product is located and will ship from. Drop shipments also state the locations those products are held. For best shipping prices, pick the part number that's at a location closest to you:

CA icon · FOB Riverside, California
WI icon · FOB Wautoma, Wisconsin
GA icon · FOB Stockbridge, Georgia

PAYMENT OPTIONS

Cards: We accept Visa, MasterCard, Discover, and American Express.
All charges will appear as "Peak Seasons" on your statement.
Cash, Checks and Money Orders prior to the shipment of your order will be accepted.
Dishonored or returned checks will be charged a processing fee of \$30.00.

SHIPPING INFORMATION

We'll ship your order by FedEx, FedEx Ground, or LTL freight line.
Next Day and Second Day shipping services are available.
Freight and handling charges will be added to your invoice.
Most orders shipped within 24 hours.

RETURNS

Only defective merchandise can be returned.
All other merchandise is considered seasonal merchandise and cannot be returned.

CONTACT INFO



CA CALIFORNIA
Peak Seasons
7240 Sycamore Canyon Bl.
Riverside, CA 92508
1.800.858.8733
Fax: 951.413.1070
Email: info@peakseasons.com

WI WISCONSIN
W7427 State Road 21/73
Wautoma, WI 54982
1.800.858.8733
*Must call for
pick up appointment

GA GEORGIA
Veldsma & Sons
160 Andrew Dr. Ste 100
Stockbridge, GA 30281
1.800.458.7919
Fax: 770.389.1751
Email: info@veldsma.biz

TABLE of CONTENTS



Artisan Trees.....	32
Baling Machines.....	45
Bamboo	61
Banners	24, 25
Bows	54, 55
Christmas Critters	15
Cinco Stands	35
Drilling Machine	31, 33
Fire retardants	23
Flagging Tape.....	46, 47
Flock	12, 13
Flock Color, High Intensity.....	14
Flock Color & Additions	11, 14
Flock Machines	18, 19
Flock Machine Accessories	21
Flocking Tools.....	20
Grower Supplies	60, 61
Inflatables.....	5
Kids' Activities	29
Lot Supplies	22, 23
Max Tapener & Supplies	51
Mini Sno-Blower & Mighty-Sno-Blower.....	18, 19
Netting	44
Pennants	23
Poly Tubing.....	21
Preservatives	10
Pro Stands	34
Quick-Fit Stand.....	32
Rebar Stands	30, 31, 36, 37
Rebar Stand Accessories.....	38
Retail Products.....	2-9
Ribbon	52, 53
Saws & Blades.....	61
Signs	42, 43
Stands.....	39
Tags	26-28
Tim Mitchell Yule Stands	30, 31
Tree Braces	38, 39
Tree Removal Bags	4
Tree Colorants & Needlehold.....	16, 17
Twine.....	22
Water Bowls	30, 36, 37, 40
Wood Stands	41
Wreath Supplies	50
Wreath Rings	48, 49
Wreath Embellishments	56-59

WWW.PEAKSEASONS.STORE

RETAIL ITEMS



MISTLETOE

Attractive silk replica
Includes festive bow and hanging string

12 pack	24 pack	Bulk pack
With display	2 clip strips of 12 ea.	50 per case
CA 41012	CA 41024	CA 41050
WI W41012	WI W41024	WI W41050
GA V41012	GA V41024	GA V41050
\$16.20	\$30.00	\$57.50



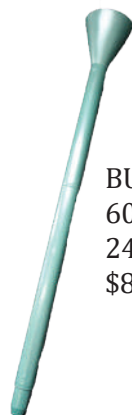
TREE STAND TRAY

28" diameter plastic tray
protects carpets and floors from
water spills Stand not included
12 per display case
WI XTRA-W
GA XTRA
\$222.00



CLEARANCE

FROSTY FUNNEL
In Display Case with Shipper Box
40011
16 per case
\$56.00



BULK - No Display
60213
24 per case
\$82.80

WATERING FUNNEL

Watering Funnels make watering your Christmas tree easy! No crawling under a decorated or flocked tree. Funnels pull apart for easy storage and cheaper freight costs.
60213-DIS
18 per case
\$72.90



SANTA BOOTS

- Festive addition to any holiday scene
- Holds fresh flowers or a 6" potted plant
- Water tight
- 8 boots per case
- CA 60211
- WI W60211
- GA SBR012
- \$36.00



FLOOR PROTECTOR

Help protect floors and carpeting from spills, stains, scratches, and needle drop with this easy to use, durable floor protector.

- 30" diameter
- Fits under most tree skirts
- Reusable

24 per case
CA 60214
GA V60214
WI W60214
\$81.60

SCENTED PINECONES

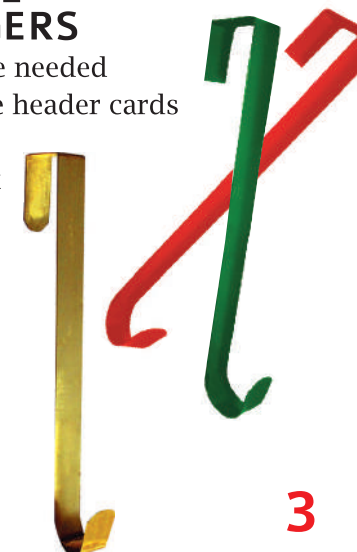
Our premium scented pinecones are ideal for boosting seasonal sales. They are carefully researched and blended, we use non-caustic fragrances, pleasing both customers and employees alike.

10oz Bag
20 per case
Cinnamon SPCC
\$71.50 case
Pumpkin SPCP
\$71.50 case
Painted/Cinnamon SPCPC
\$76.50 case



PAINTED METAL WREATH HANGERS

- No nails or hardware needed
- Comes with peggable header cards
- 12.5"L x 1"W
- GREEN/GOLD/RED Mix
- 36/case
- CA 91421-CA
- GA 91421
- WI 91421-W
- \$88.20



RETAIL ITEMS



SNOW BLOWER

- 16 oz.
- For artificial greens
- 12 per case
- CA 523
- \$62.40



ICE CRYSTALS

- 5 oz.
- For glass surfaces
- 12 per case
- CA 542
- \$52.80



SPRAY SNOW

- 13 oz.
- For fresh greens
- 12 per case
- CA 506
- WI W506
- GA V506
- \$38.40

CHRISTMAS TREE DISPOSAL BAG



JUMBO

- Use as a tree skirt
- Use as a removal bag
- 144" circumference
- 114" Height
- 36 pack counter display
- CA 40502
- WI W40502
- GA V40502
- \$66.60

TWO-IN-ONE VALUE PACK

- Two great Christmas products packaged in a sturdy poly bag
- 2 oz. Keeps-It-Green®
- Tree removal bag
- 12 per case
- CA 20135
- WI W20135
- GA V20135
- \$36.60 case



BIODEGRADABLE CHRISTMAS TREE DISPOSAL BAG

- Bag decomposes with tree
- Prevents messy clean up
- Extra protection for carpets and floors
- Use as a skirt to hide tree base
- Covers up to an 8' tree
- 90" height
- 144" circumference
- 50 per counter display

- CA 40501
- GA V40501
- WI W40501
- \$81.50



- Bulk pack, 50 per case
- No counter display
- CA 40550
- GA V40550
- WI W40550
- \$59.00

CHRISTMAS INFLATABLES

Spread holiday cheer with these colorful, giant inflatables! They are a sure way to elevate your presence and attract more customers to your Christmas tree lot, business, or farm!

- Built-in air pump
- Built-in LEDs
- Ground Stakes included

WAVING SANTA ARCH

L: 10'4" W: 5'6" H: 11'8"

- CA 27424
- GA V27424
- \$95.85 ea.



9' WAVING SANTA

- CA 27391
- GA V27391
- \$68.90 ea.

7' TALL SANTA AND PESKY PUP

- CA 27152
- GA V27152
- \$75.40 ea.



RETAIL ITEMS

Shipped from Georgia



KNITTED SHELF SITTER/ ORNAMENT

- Assorted characters holding a wood ornament
 - Knit bodies with button and bead legs, felt shoes
 - 11 inch overall height
 - 36 per case
 - GA 6018
- \$34.20 case



METAL ORNAMENTS

- 6 assorted
 - 36 per case
 - GA 91470
- \$34.20 case

WOODLAND BUFFALO PLAID ORNAMENTS

- 8 assorted
 - 24 per case
 - GA 91167
- \$22.80 case



"READ THIS" SOCKS

- 9 Styles, 36 per case
 - GA 408650
- \$138.60 case

Kick up your feet and let your socks do the talking! These comfy knit socks feature playfully demanding designs with funny "if you can read this" quotes on each sole.

- Funny & festive
- Comfy cotton blend
- Machine washable
- Carded and peggable
- One size fits most

9 Styles: "If you can read this...":

- Give Me a Donut - 4pc
- Christmas Movie - 4 pc
- Where Is My Gift - 4pc
- Let's Drink Up - 4pc
- Bring Me Eggnog - 4pc
- Bring Me Hot Cocoa - 4pc
- Been Very Good - 4pc
- Chillin With the Gnomies - 4pc
- I'm On Vacation - 4pc



BABY SNOWMAN LANTERN CANDLES

- 10 oz
 - 3 assorted, 12 per case
 - GA BSM012
- \$132.00 case

New!



Celebrate winter with our decorative snowman jar candles. Proudly made in the USA.

- Lantern style handles
 - Paraffin wax
 - 75 hours burn time
- Scents: Candy Cane, Welcome Wreath, Sugar Cookie

CHRISTMAS COLLECTION FARM FRESH CANDLES

- 20 oz. each candle
 - Double wicked for an even burn
 - 95 hours burn time
 - 3 each of 4 scents: Cozy Cabin, Cranberry Orange, Banana Nut Bread and Balsam Fir
 - 12 per case
 - GA FFCC012
- \$159.00 case



SEASONAL MINI FARM FRESH CANDLES

- 6 oz. candles
 - 4 each of 6 scents: Balsam Fir, Banana Nut Bread, Cranberry Orange, Crumb Coffee Cake, Papa's Pumpkin Pie and Holiday Homecoming
 - 24 per case
 - GA SMFARM
- \$154.80 case

CHRISTMAS MAMA LIGHT KEEPER COLLECTION

Scented jar candles with heavenly smells for home decor or as a great housewarming or hostess gift.

- 22 oz. each candle
 - Double wick ensures even burn
 - 3 each of 4 fragrances: Gingerbread, Aspen Berry, Balsam Cedar and Winter Wonderland
 - 125 hour burn time
 - 12 per case
 - GA CMK012
- \$159.00 case



RETAIL ITEMS

Shipped from Georgia

JINGLE BELL NECKLACE



- Brass-look bell
- Measures 1.5" diameter
- 28" red satin cord
- Quick-release snap closure
- 48 per case
- [GA 4699](#)
- \$31.20 case

JINGLE BELL BRACELET



- Stretch bracelet fits all
- 2 assorted color ways
- Carded and peggable in an attractive counter display
- 24 per display
- [GA 29381](#)
- \$56.40 case

New Packaging!



CHRISTMAS LIGHT-UP HAND SPINNERS

- Color changing, spinning light show
- 3 assorted, individually blister packed Christmas tree, Snowman, Santa
- Approximately 5" tall
- 3 - LR44 batteries and lanyard included
- 12 per tray
- [GA 702066](#)
- \$49.20 case



BIG BULB FLASHING NECKLACE

12 per case
[GA 702325](#)
\$66.00 case

This 8 LED Big Bulb Necklace will make you the life of any party!

- 3 Flashing Modes
- 8 super bright LEDs
- 3 LR44 Batteries included



HOLIDAY SPATULA & COOKIE CUTTER GIFT SET

4 asst, 24 per case
[GA 68336](#)
\$138.00 case

'Tis the seasons for baking! Spread holiday magic with a cute spatula and cookie cutter set. Easy-to-clean silicone spatulas in four Christmas designs come packaged with a metal tree-shaped dough cutter. Gift it as is, with homemade baking mixes or add a festive feel to your own kitchen. Peggable handles and a free counter display make this set a great choice for any store layout.

- Four festive spatula designs - All I Want For Christmas Is Cake, Dear Santa I Tried, Christmas Calories Don't Count, and Ho, Ho, Ho
- High heat resistant silicone
- Removal be wooden handle
- Metal tree shaped cookie cutter



MINI CANDY CANES

The perfect giveaway

- 2.5" tall
- Individually wrapped
- 100 pieces per box
- [GA CCC100 Red/White](#)
- \$11.50 box



CHRISTMAS TREE SWIRL POP

- Christmas Tree shaped green and white swirl pop
- Mixed fruit flavor
- 2" candy on 5.25" stick
- Individually wrapped in printed wrapper with star and decorations
- 48 pops per case
- [GA 75834](#)
- \$26.40 case



COZY CUTIES FUZZY SOCKS

3 asst, 24 per case
[GA 28194](#)
\$92.40 case

Warm those chilly feet with these super-soft fluffy socks in three-dimensional classic stylings: Santa, snowman and reindeer. Vibrant colors and striped legs. One size ships in free counter display. 'Tis the season to be toasty!

- Great stocking stuffer
- Classic Christmas Icons
- Lovely counter display



JUMBO LIGHT-UP ANTLER HEADBAND

24 per case
[GA 64512](#)
\$111.60 case

Party animal approved! These fuzzy antler headbands are decked out with eight jumbo Christmas bulbs that light up with the touch of a button. Great for Secret Santa, parties, holiday lights, prizes and more!

- Ultra bright LEDs
- Super soft material
- Hidden on/off switch
- Batteries included
- Carded & peggable



HARD CANDY PEPPERMINT SPOONS

- A sweet twist on traditional Christmas candy. Perfect for stirring cocoa!
- Packed 48 per case
- [GA 48093](#)
- \$57.60 case



FINGER PUPPETS

A great stocking stuffer or giveaway
2" vinyl
Assorted: Hermey the Elf, Bumble the Abominable Snow Monster, Santa Claus and Rudolph
24 per case
[GA 79548](#)
\$13.20 case



TREE PRESERVATIVES

KEEPS-IT-GREEN®

"The only preservative that worked better than water alone." This was the conclusion of Washington State University in a 4-week test comparing preservatives. Available in 2oz. and 8oz. sizes, Keeps-It-Green is great for both trees and your profits!



- Prolongs freshness and extends tree life
- Reduces fire danger
- Retards needle drop



8 oz. SIZE

- Makes 8 gallons
- 36 pack counter display
- CA 16136
- WI KIG08
- GA KIG036
- \$47.88 case

2 oz. SIZE

- Makes 2 gallons
- 48 pack counter display
- CA 16148
- WI KIG02
- GA KIG148
- \$45.12 case



PROLONG

- Keeps Christmas trees and cut flowers fresh
- 8 oz. bottle makes 4 gallons
- 36 per counter display
- GA PTP036
- \$84.60 case



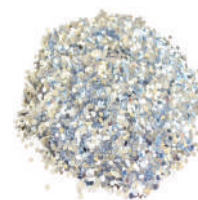
TREE LIFE NUTRIENT

- Scientifically formulated to prolong the life of Christmas trees and cut greenery
- Non-toxic
- Each packet makes 1 gallon
- 100 packets per display case
- WI TLP100
- GA VTLP100
- \$65.00 case

MAKE IT SPARKLE!

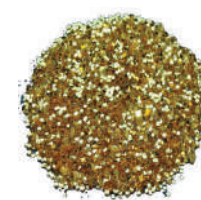
GLITTER

- Precision Cut
- 1 lb. bag
- \$14.10 bag



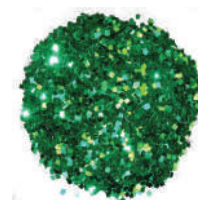
SILVER

CA 12302
GA V12302



GOLD

CA 12303
GA V12303



GREEN

CA 12304
GA V12304



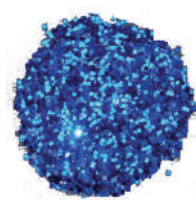
RED

CA 12305
GA V12305



WHITE

CA 12306
GA V12306



BLUE

CA 12307
GA V12307



MULTI

CA 12308
GA V12308



OPALINA FLAKES

Every flocked tree should have these iridescent flakes to transform light into dancing magic.

1 LB. BAG

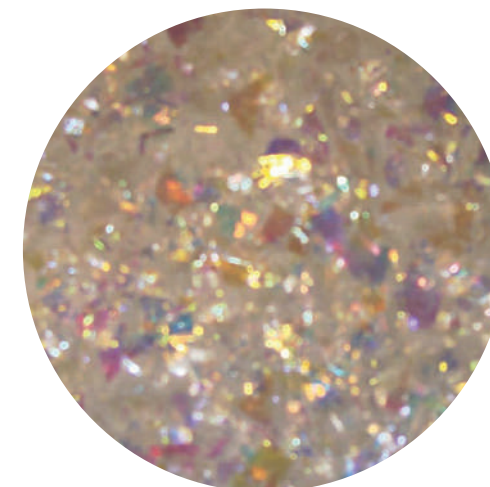
- CA 12330
- WI W12330
- GA V12330
- \$10.90 bag

5 LB. BAG

- CA 12332
- GA V12332
- \$51.75 bag

20 LB. BAG

- CA 12333
- GA V12333
- \$195.75 bag



TREE FLOCK & MORE

Peak Seasons is the largest
seller of Christmas Flock
In the US, Europe
Mexico and Canada



SNO-BOND™ FLOCK

America's Best Selling Brand

The finest quality cellulose paper enhanced with brighteners to produce an ultra-white flock!

- Ultra-bright white
- Fast drying
- Flame retardant
- Approved by State of California Fire Marshal
- Easy to use bags

25 lb. BAG

CA 11101

WI W11101

GA V11101

•\$35.50 bag

5 lb. BOX

CA 11105

WI W11105

GA V11105

•\$19.10 box



with
Opalina

SUPERSTICK™ FLOCK WITH OPALINA

This formula utilizes high content of the best adhesives available. Opalina is added for pearlescent sparkle effect. Great for wreaths, trees, boughs and centerpieces.

- High adhesive content
- Sparkling effect
- Fast drying
- Flame retardant
- Easy to use bags

Approved by the California State Fire Marshal

25 lb. BAG

CA 11121

WI W11121

GA V11121

• \$43.80 bag

5 lb. BOX

CA 11115

WI W11115

GA V11115

• \$21.35 box



PREMIUM™ FLOCK

This popular label was acquired from International Fiber Corporation in 2007 and still made with the same care and quality you've always expected.

- Ultra-bright white
- Fast drying and super adhesive
- Flame retardant
- Easy to use 25 lb. bags

Approved by the California State Fire Marshal

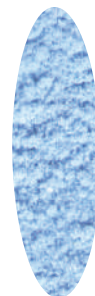
25 lb. BAG

CA FLK003

GA VFLK003

• \$35.50 bag

Ready-to-Use Flock



SUPERSTICK ICE PINK

with Opalina

25 lb. BAG

CA 11123

GA V11123

• \$43.80 bag

5 lb. BOX

CA 11117

• \$20.55 box

SUPERSTICK ICE BLUE

with Opalina

25 lb. BAG

CA 11122

GA V11122

• \$43.80 bag

5 lb. BOX

CA 11116

• \$20.55 box

SUPERSTICK BRIGHT WHITE

Without

Opalina

25 lb. BAG

CA 11120

GA V11120

• \$43.70 bag

WHITE OUT CHRISTMAS TREE SNO-FLOCK

Introducing our newest flock!

White Out Sno-Flock is manufactured to produce longer fibers, which creates bigger flakes, resulting in faster build.

- Ultra bright white
- Flame retardant
- Fast drying
- Quicker build
- Low dust
- Approved by the California State Fire Marshal

25 lb. Bag

CA 11155

WI W11155

GA V11155

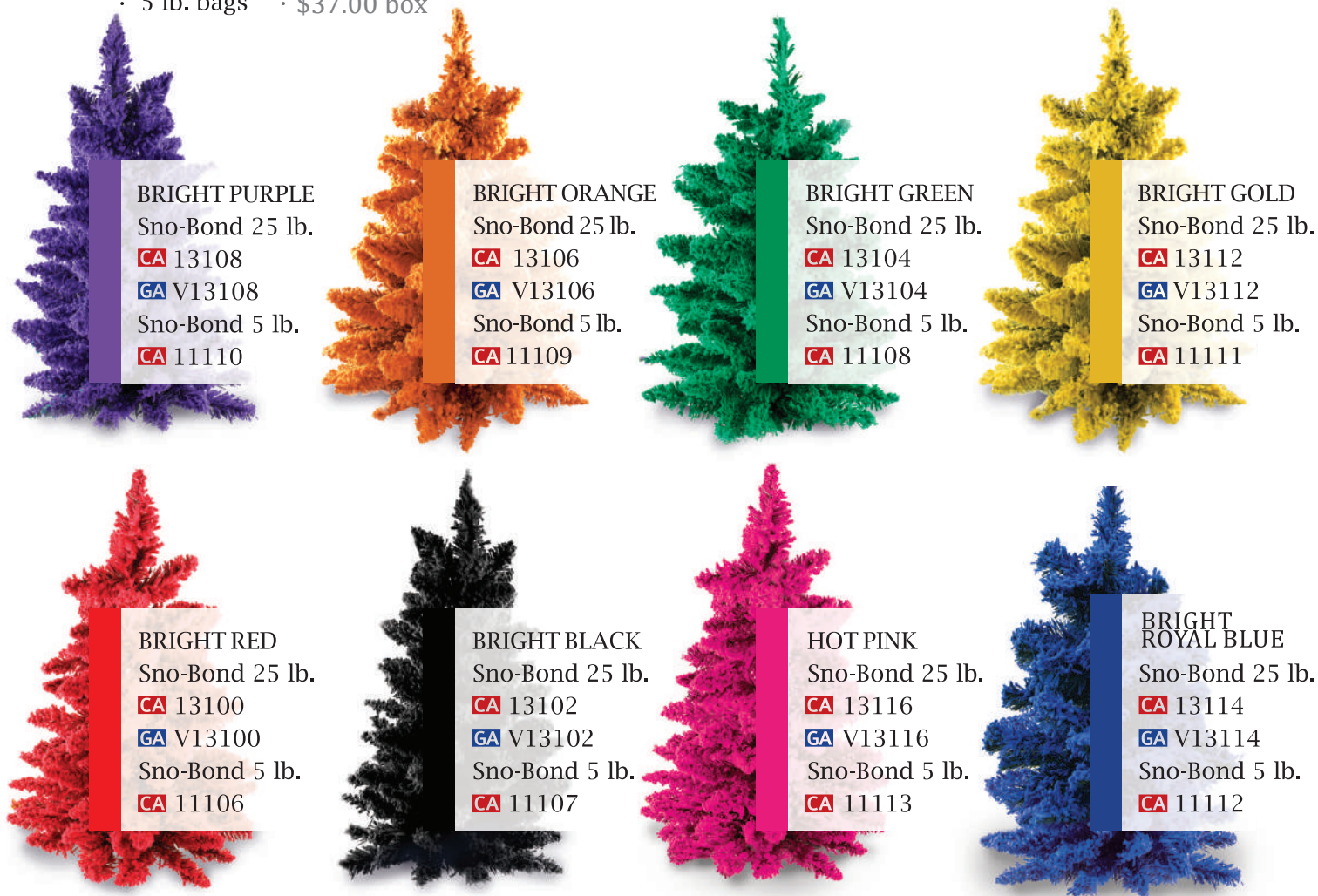
• \$38.50/ bag



FLOCK COLOR

High-Intensity

- Made from deluxe cotton fibers
- 25 lb. bags · \$79.00 bag
- 5 lb. bags · \$37.00 box



DRY FLOCK COLOR IN 1-LB. CONTAINERS

- Add directly to white flock material
- Great pastel effects!
- \$12.25 jar



*** Please note there can be color variances year to year ***

CHRISTMAS CRITTERS

Shipped from California

*Delight Your Customers with
an Easy Add-On Sale!*

CHRISTMAS CRITTERS

Add whimsy to the holidays with Bambi's Christmas Critters and Snowmen! Each is hand-crafted from fallen tree logs, come fully assembled and only need creative embellishments to delight anyone within sight. Available in several sizes, each can easily be enhanced by your imagination with bows, collars, other foliage, etc. (Boughs and decorations shown not included.)



SMALL CHRISTMAS CRITTER

- 16-18" height without antlers
- 50 per case
- CA CC-101

• \$1,107.50 case

MEDIUM CHRISTMAS CRITTER

- 20-21" height without antlers
- 32 per case
- CA CC-102

• \$1,001.60 case

LARGE CHRISTMAS CRITTER

- 24-26" height without antlers
- 24 per case
- CA CC-103

• \$1,004.40 case

COMBO PACK CHRISTMAS CRITTERS

- 18 small, 10 medium, 6 large
- CA CC-104

• \$963.00 case



RED BOW

- Bow width 8"
- Bow tails 12"
- Tied with gold braided wire
- CA CCBOW
- \$1.12 ea



SNOWMEN

MINI SNOWMAN

- 8-9" height with hat
- CA SMC101

• \$17.25 ea

LARGE SNOWMAN

- 14-17" height with hat
- CA SMC102

• \$26.65 ea

SNOWMAN COMBO PACK

- 18 mini and 10 large
- CA SMC103
- \$554.15 case



KOLORS BY KIRK

KIRK STUNNING TREE COLORANTS



- Dries quickly for immediate customer satisfaction (1-3 hours depending on weather)
- Simple field or lot application, no water needed
- Can be combined with flock to create new textures
- Applies easily with any backpack or airless sprayer
- Clean up is easy with water
- 2.5 gallon jugs
- \$60.40 jug

CHRISTMAS TREE COLORANT

SNOWFALL

WI 22550116
GA KBK201

BABY BLUE

WI 22550316
GA KBK202

BUBBLEGUM

WI 22550216
GA KBK203

HOLLY BERRY

WI 22550716
GA KBK204

MIDNIGHT BLUE

WI 22550816
GA KBK205

SUGAR PLUM

WI 22550916
GA KBK206



TURQUOISE

WI 22551416
GA KBK207

MAGENTA

WI 22551516
GA KBK208

TANGERINE

WI 22550209

SANTA'S BOOTS

WI 22550210

VIBRANT METALLIC COLORS



GOLD MEDALION

WI 22550211
• \$75.90 ea.



ROSEWOOD

WI 22550212
• \$75.90 ea.

MIX & MATCH 4-COLOR VARIETY PACK

Choose 1 gallon each of your favorite 4 colors
\$109.60 per 4 pack
• Choices include total of 4 of the following:

Snowfall, 1 of 4/case

WI 225-KBK-101

Baby Blue, 1 of 4/case

WI 225-KBK-102

Bubblegum, 1 of 4/case

WI 225-KBK-103

Holly Berry, 1 of 4/case

WI 225-KBK-104

Midnight Blue, 1 of 4/case

WI 225-KBK-105

Sugar Plum, 1 of 4/case

WI 225-KBK-106



KIRK NATURAL TREE COLORANTS

- Keep your trees looking green, healthy, and fresh throughout the Christmas selling season
- Perfect color enhancing products backed by years of devoted research and development
- Single applications delivers uniform coloring
- Produces a believable, natural color that won't wash off or fade from weather or sun light
- Non-toxic, environmentally safe, and contains no heavy metals or mercury

SUPER PINEGREEN

- Easy to spray when diluted
- Colorfast. Will not wash off or fade after drying
- Natural color

2.5 gal./jug

WI 22551216

GA KSP025

• 5 gal./pail

WI 22550416

GA KSP050

• \$59.06 jug

\$116.80 pail



VIRGINIA PINEGREEN

- Custom-formulated for Virginia Pine
- Even, thorough coating with a beautiful color

2.5 gal./jug

WI 22553516

GA KVP025

• 5 gal./pail

WI 22553416

GA KVP050

• \$62.35 jug

\$122.05 pail



LEYLAND CYPRESS COLOR ENHANCER

- Formulated to enhance Leyland Cypress
- Definitive difference at harvest

2.5 gal./jug

WI 22554716

GA KLC025

• 5 gal./pail

WI 22554616

• \$61.05 jug

\$119.45 pail



SPECIAL FORMULA II SUPER PINEGREEN

- A deeper version of the standard formula for trees that may turn excessively yellow or customers who prefer a darker green color
- 2.5 gallon jug
- WI 22552916
- GA KSF025
- \$61.65 jug



PREMIUM FIR GREEN COLORANT

2.5 gal. jug

WI 22554416

5 gal. pail

WI 22554316

• \$60.35 jug

\$118.10 pail



KIRK NEEDLEHOLD

For trees, wreaths, parlants and fresh greenery

- Prolongs a tree's just-cut appearance
- Application after assembly is recommended
- Safe and non-toxic
- Forms a colorless, durable film
- Reduces water loss
- Mixes 1:4-6 with water
- 2.5 gallon jugs, 5 gallons per case

WI 22551316

GA KNH025

\$63.00 jug/ \$126.00 case



ASTONISHING FLOCKING KITS



MINI SNO-BLOWER

Patent Pending

Designed for low volume flocking needs and use with high-intensity flock colors. Powerful, light-weight, simple! Each Mini Sno-Blower comes with all necessary hoses and a carry strap that helps keep your hands available for accurate flocking. Use with the Shop-Vac or your own flock machine. Just wipe the bucket for an easy 30-second clean up! Holds 4 pounds of flock-enough for a 6 ft. tree.

CA 13040

GA V13040

. \$169.95 ea

SCOOP

CA 13142

. \$12.10ea



Two spray nozzles for proper spray pattern

**Go to www.peakseasons.store
"ABOUT US" tab for instructional video



MINI SNO-BLOWER KIT

Patent Pending

Our Mini Sno-Blower Kit is powerful, light-weight and an affordable way to flock trees. Each Mini Sno-Blower Kit comes with all necessary hoses, a carry strap that helps keep your hands available for accurate flocking and a high-velocity blower for plenty of spray power.

- Designed for commercial flocking and high-intensity flock colors
- Easy to use, light weight
- Holds 4 lbs., enough to cover a 6 ft. tree
- High velocity blower motor
- Air lock canister has no moving parts
- 4 vacuum attachments for easy clean up

Mini Sno-Blower Kit Includes:

- 2½ gal. air lock canister
- 12 ft. air hose
- 12 ft. water hose
- 7 ft. electrical cord
- High-velocity blower

CA 13041

GA V13041

. \$261.75 ea



MIGHTY SNO-BLOWER

The new MIGHTY SNO-BLOWER is a revolutionary flock machine that utilizes German engineering to transform and separate micro fibers into a delicate and even accumulation of "snow like flakes" that looks like the work of Mother Nature herself. You can't tell the difference.

- Mobile light weight plastic cabinet
- For that special look, you can adjust water volume, spray pattern and material flow
- Comes with a Deluxe flock gun, flock hose and water hose
- Save money, this machine's new 'micro separator' will allow you to flock one extra 5-6 ft. tree per bag
- German engineered, built in the U.S.A.

CA 13030

GA V13030

\$1,167.00 ea

MIGHTY SNO-BLOWER WITH CADILLAC MOTOR

CA 13030-CAD

\$2,467.00 ea



**Go to www.peakseasons.store
"ABOUT US" tab for instructional video

WHITE OUT CHRISTMAS TREE SNO-FLOCK

Introducing our newest flock!

White Out Sno-Flock is manufactured to produce longer fibers, which creates bigger flakes, resulting in faster build.

- Ultra bright white
- Flame retardant
- Fast drying
- Quicker build
- Low dust
- Approved by the California State Fire Marshal

25 lb. Bag

CA 11155

WI W11155

GA V11155

\$38.50/ bag



FLOCKING TOOLS & ACCESSORIES

STANDARD BLOWER MOTOR

Assembly Complete

- Includes: motor, mounting plate, fan
- 10,000 RPM blower motor
- Higher torque
- CA 70610
- GA V70610
- \$278.75 ea



CADILLAC BLOWER MOTOR

- 13,000 RPM blower motor
- For high-volume flock operations
- Available for all models (except the M-50 Compact)
- CA 70605
- GA V70605 · \$1,022.40 ea



DELUXE FLOCK GUN

Back per consumer request.

- Light weight, made of aluminum and brass
- Adjustable spray pattern
- Water gun handle is interchangeable with any 1 1/4" water gun
- Hoses not included
- CA 70211
- GA V70211
- \$215.75 ea



DELUXE FLOCK GUN WITH 3-TIP HEAD

Designed after the Frosty Flock Gun. Changes small flock particles into giant snowflakes.

- Lightweight aluminum and brass
- 3-head design
- Water gun handle is interchangeable with any 1 1/4" water gun
- Hoses not included
- CA 70211-3
- GA V70211-3
- \$215.75 ea



DUST MASK

- 50 per case
- CA 60270
- \$62.50 case

FLOCKMASTER™ GEAR DRIVE TURNTABLE

Most popular--AND MOST DURABLE!--turntable in the industry. Designed for heavier trees with a substantial 42" x 42" top, our gear driven turntable allows for even, consistent coverage.

- CA 70220
- GA V70220
- \$640.70 ea



REPLACEMENT GEARMOTOR

TT/Gear-Driven 94-on (Maxi-Torq 25 RPM)

- CA 70810
- \$167.75 ea



POLY TUBING TREE BAG RACK

- Holds 3 rolls
- All metal construction
- Completely assembled
- Accommodates all 4 sizes
- CA 45449
- GA V45449
- \$198.85 ea



FLOCKMASTER™ DELUX TREE MOVER

Flocked trees are delicate and heavy to move--lift over 100 lbs with one hand!

- Equipped with rubber wheels
- Completely adjustable
- Weights 50 lbs.
- CA 70227
- GA V70227
- \$572.70 ea



POLY TUBING

- Continuous 500' rolls, cut to size
- Protects flocked trees from bad weather
- Protects car from flock and needles
- 54" W x 500' L (1 mil) · \$62.85 ea
- CA 45450
- GA V45450
- 72" W x 500' L (1 mil) · \$81.60 ea
- CA 47250
- WI W47250
- GA V47250
- 84" W x 500' L (1 mil) · \$92.80 ea
- CA 48450
- WI W48450
- GA V48450
- 96" W x 500' L (1.5 mil) · \$145.15 ea
- CA 49650
- WI W49650
- GA V49650



1 1/4" FLOCK HOSE

- 12' L and fittings
- CA 70684
- GA V70684
- \$48.30 ea



WATER HOSE

- 12' L
- CA 70693
- GA V70693
- \$45.00 ea



BINDER TWINE

- 2,500 ft./roll
- 5 pounds
- 100# tensile
- CA 60226
- \$15.45



POLY TWINE

- 10,500 ft./roll
- 10 pounds
- 200# tensile
- CA 60227
- \$46.20 ea



POLY TYING TWINE

- 5,500 ft./box
- 220# tensile
- CA PTT550-CA
- GA PTT550
- \$35.00 ea.



POLY BALING TWINE

- 7,440 ft./roll
- 5 pounds
- 80# tensile
- CA PBT501-CA
- GA PBT501
- \$25.30 ea.



KIRK BAILING TWINE

- 1250'lb Rolls
- White
- WI BT61018
- \$78.75 case
- 8 rolls per case



LIGHT SOCKET

- CA 60235
- \$2.85

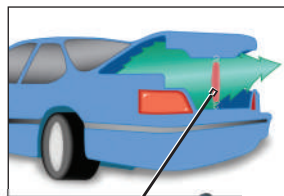


TALLY METER

- CA 60229
- WI TC10012
- GA V60229
- \$13.65 ea

SNAPPY TRUNK TIE

- Rubber tie down strap with hooks
- Quick and easy trunk closure
- 50 per bag
- CA 60201
- WI STLH60001
- \$37.50 bag
- 250 per case
- GA SNX250
- \$.75 ea/\$187.50 case



*Light
your
lot!*



OUTDOOR LOT LIGHTS

- Ready to use exterior display lights
- 100 Ft. length with 10 sockets (one every 10')
- 14/2 flat wire cable
- Weather resistant sockets in non-corrosive, bulb protecting cages with easy snap-on/snap-off installation
- Accommodates up to 200 watt bulbs (not included)
- Eyelet hook for easy hanging
- UL Listed/Contractor grade
- Meets OSHA requirements
- Patented packaging provides tangle-free handling
- CA 60237
- WI TL62022
- GA LL800
- \$141.80



RING KNIFE

- ASSORTED SIZES
- CA 60228 12/pk
- WI RK000
- GA V60228
- \$48.00 pack

LIT'L SHAKEE TREE SHAKER

A compact, vertical shaker designed specifically for retail or choose-and-cut operators. Light weight with handles for easy moving. For added stability, Lit'l Shakee can be mounted on skids.

- Heavy duty 3/4 HP totally enclosed fan-cooled electric motor with automatic reset
- Single phase 110V - 10 Amps
- 7" diameter cone
- Two year warranty
- FOB, Woodburn, OR
- OR TRSH01
- \$2084.50 ea



LIT'L SHAKEE TREE SHAKER TREE ARM

- Optional tree holder
- OR TRSHA02
- \$130.20 ea



21" CHRISTMAS TREE DISPLAY ARM

- Christmas Trees are easily displayed
- No need for tree stands
- Made of sturdy, rustproof plated metal
- Use over and over, year after year!
- CA 60207-K
- GA V60207-K
- 20/case
- \$144.00 case

EVERGREEN™ COMMERCIAL FLAME RETARDANT

MOST STATES REQUIRE CHRISTMAS TREES PLACED IN PUBLIC BUILDINGS TO BE FLAME PROOFED

EverGreen Christmas Tree Flame Retardant received the highest rating by the state of California Fire Marshal. EverGreen earned a perfect score in test criteria conducted by an authorized independent testing laboratory.

Tested and approved to meet nationally recognized tests for Christmas tree flame-proofing. Check with your local Fire Marshal for regulations.

- For interior use only
- Easy to use-no mixing
- Use full strength, the colorless liquid dries clear
- Non-toxic, non-carcinogenic
- Biodegradable



- 5 GALLON
- CA 55557
- \$129.75 ea



- 1 GALLON
- CA 55556
- WI W55556
- GA EFR102
- \$28.60 ea

PLASTIC PENNANTS

- Weatherproof plastic
- Each pennant measures 9"W x 12"L
- Available in 60' (50 pennants) or 120' (100 pennants) lengths
- Christmas colors of red, green & white
- CA 60050 60' • \$13.25 ea
- WI PP0050 60' • \$13.25 ea
- GA CCP060 60' • \$13.25 ea
- GA CCP120 120' • \$18.25 ea



BANNERS

All banners are reinforced quality vinyl

- Borders are sewn for durability and to help withstand the elements
- Pre-grommetted for ease of hanging



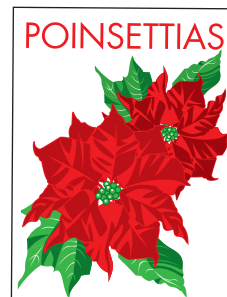
- Full color
- 6'H x 15'W
- CA 60005
- GA V60005
- \$230.75



- Full color
- 3'H x 12'W
- CA 60004
- WI W60004
- GA V60004
- \$97.20



- 2-color
- 3'H x 6'W
- CA 60002
- WI W60002
- GA V60002
- \$59.30



- 3-color
- 4'H x 3'W
- CA 60010
- WI W60010
- \$54.35



- 2-color
- 3'H x 8'W
- CA 15806
- WI W15806
- \$60.90



- 1-color
- 3'H x 8'W
- CA 15801
- \$60.90



- Full-color
- 3'H x 15'W
- CA 60009
- WI W60009
- GA V60009
- \$91.20

- 1-color
- 3'H x 15'W
- CA 15334
- WI W15334
- \$91.20



- 2-color
- 3'H x 15'W
- CA 60001
- WI W60001
- GA V60001
- \$91.20

- 2-color
- 3'H x 15'W
- CA 15330
- WI W15330
- GA V15330
- \$91.20



- Full-color
- 3'H x 15'W
- CA 60008
- GA V60008
- \$91.20



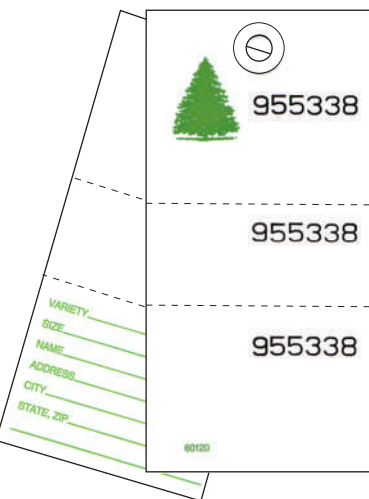
- Full-color
- 3'H x 8'W
- GA V60011
- \$60.90



SALES CONTROL TAGS

POLYART TAGS

- Extremely durable
- Stands up to water, grease, weather, and chemicals
- Combines the strength of plastic with the printing quality of paper
- Prewired
- 100/bundle



- SALES #6**
- Numbered
 - 3 part
 - Back: variety, customer info
- CA** 60120
WI TT63025
GA TTC703
- \$26.50

- SOLD TAG**
- 2.375" x 4.75"
- GA** TTC705
CA TTC705-CA
WI TTC705-WI
- Pack of 100
- \$18.95

SHARPIE MARKERS

- Permanent marker
 - Fine point tips
 - Black
- GA** PLM001

\$1.35 ea

IDENTI-PENS



- Weatherproof
- Does not fade
- Each pen includes broad and fine point tips
- Note: 5 second drying time
- Works best for Polyart Tags

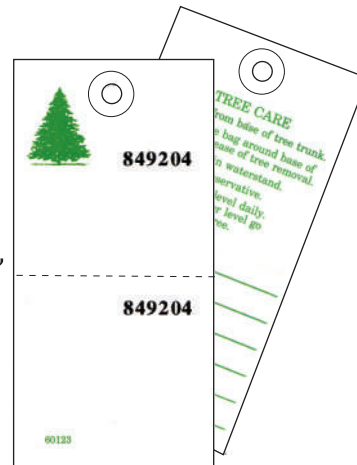
GA 44101 • \$4.30 ea.

MULTI-COLOR PACK OF 4 COLORS

GA 44161 • \$14.50 ea.

SALES #4

- Numbered
 - 2 part
 - Back: tree care, customer info
- CA** Tag550
- \$24.15



SALES #5

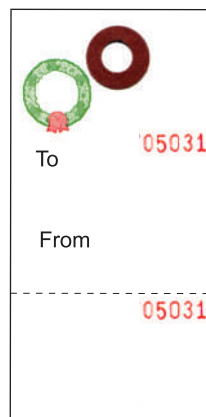
- Numbered
- 2 part
- Back: tree care, customer info

CA 60123
WI TT63022
GA TTC702

• \$26.10

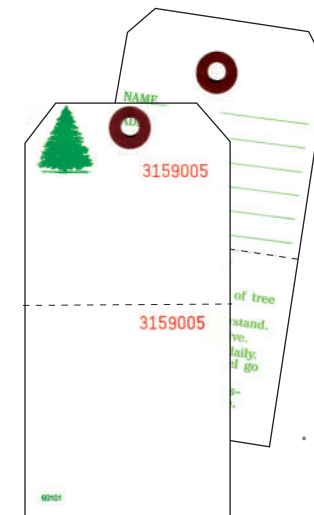
WREATH #5

- 2 part
 - Numbered
 - Back: blank
- CA** 60122
WI TT63024W
GA TTC716
- \$29.00



HEAVY-DUTY CARD STOCK TAGS

- All tags bundled 100 each
- Pre-wired with reinforced eyelets
- Weather resistant



SALES #7

- Numbered
- 2 part
- Back: tree care tips, customer info

CA 60101
WI W60101

• \$14.65



SOLD #7

- 2 part
- Day-Glo orange
- Back: special instructions

CA 60104
WI W60104
GA TTC704

• \$15.05



FIRE

RETARDANT #7

- Back: blank
- CA** 60105
- \$14.50/bundle
- GA** TTC707
- \$0.35 ea



- ECONOMY #5
- Numbered
- 2 part
- Back: tree care tips, customer info

CA 60106

• \$15.00

THERMAL TAGS



- 7" x .75"
- Weatherproof vinyl
- Note: Only IDenti-Pen recommended on Thermal Tags
- Pack of 100
- \$5.65 pack

GA TLT101 • TURQUOISE

GA TLT102 • GREEN

GA TLT104 • ORANGE

GA TLT105 • PINK

GA TLT106 • RED

GA TLT107 • WHITE

GA TLT108 • YELLOW

THERMAL TAG CUSTOM PRINTING

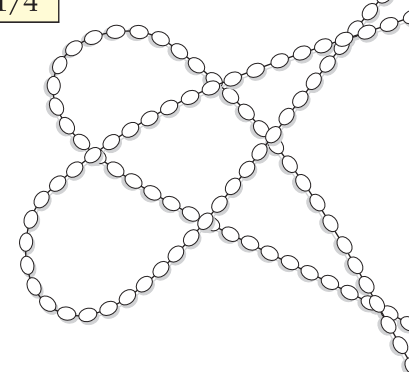
- Minimum order for printing: 1000 tags
- Colors can be mixed
- Min. 100 tags per message
- \$9.65 per 100 includes setup and print charge
- Copy change fee: \$2.00 per variety/message

SIZE CHART

TAG No.	DIMENSIONS
#3	1-7/8" x 3-3/4"
#4	2-1/8" x 4-1/4"
#5	2-3/8" x 4-3/4"
#6	2-5/8" x 5-1/4"
#7	2-7/8" x 5-3/4"
#8	3-1/8" x 6-1/4"

SECURITY TIES

- 5" length
 - 500/pack
- CA** 60128
WI TT63040
- \$14.40
- GA** STT100
- \$4.20/100 pack



MORE TAGS

NATIONAL CHRISTMAS TREE ASSOCIATION STYLED TAG



- 2-color
- Front: "Celebrate the season with a festive fresh-cut Christmas tree!"
- Back: history of Christmas trees and tree care instructions
- Sales 3¼"W x 8¾"H
- 100 per pack
- CA TAG050
- WI TT63027
- GA CTC201
- \$22.65/pack

COLORED SECURE TAGS



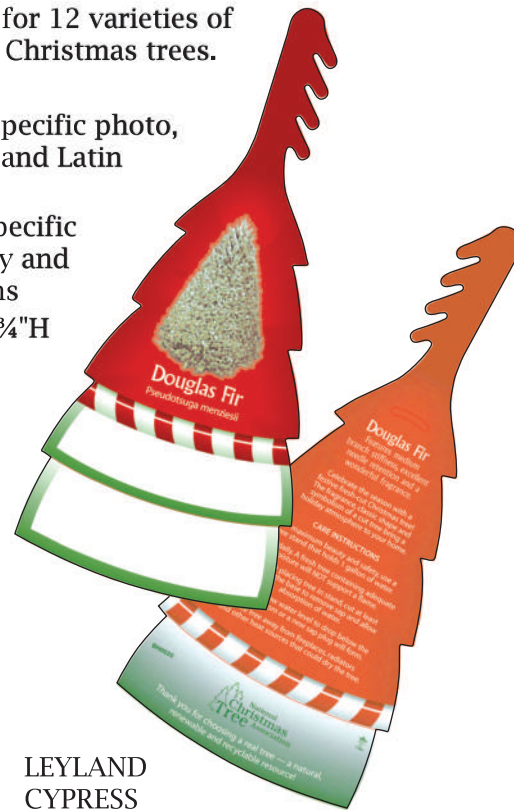
- 2 part
- Numbered
- 2.25" x 4.75"
- Weatherproof permafiber
- Back: customer info
- Sure-ties included
- Pack of 100
- \$18.00

- GA TTC601 • Blue
- GA TTC604 • Orange
- GA TTC606 • Red
- GA TTC607 • White
- GA TTC608 • Yellow
- GA TTC609 • Purple

DELUXE CHRISTMAS TREE SPECIFIC TAG

Tree-shaped tags for 12 varieties of the most popular Christmas trees.

- 4-color
- Front: Variety-specific photo, common name and Latin name
- Back: Variety-specific descriptive copy and care instructions
- Sales 3¼"W x 8¾"H
- 100 per pack
- \$22.65/pack



BALSAM FIR

WI TT63011

GA CTC207

CANAAN FIR

WI TT63000

COLORADO BLUE SPRUCE

WI TT63013

GA CTC211

DOUGLAS FIR

WI TT63001

GA CTC206

FRASER FIR

WI TT63009

GA CTC208

GRAND

WI TT63020

LEYLAND CYPRESS

WI TT63028

GA CTC212

NOBLE

WI TT63021

NORDMAN

WI TT63023

SCOTCH PINE

WI TT63007

SPRUCE

WI TT63019

VIRGINIA PINE

WI TT63005

WHITE PINE

WI TT63003

GA CTC203

COLORED SECURE TAGS MULTI PACK

- 500 per pack
- 100 each: red, yellow, blue, white, orange
- Pack of 100
- GA TTC708
- \$90.00

KID'S CORNER

CLASSIC COLORING BOOKS

Learning about Christmas Trees can be fun!

It's the perfect giveaway! A delightful 16-page coloring book for children (your future customers) that teaches them about real Christmas Trees. Stamp the name of your tree farm/lot on the back and families remember your name all year long!

- 16 pages
- 18.25" x 10.62"
- Please specify edition when ordering
- 250/case
- \$91.30 case



WI CB6001
GA NCB101



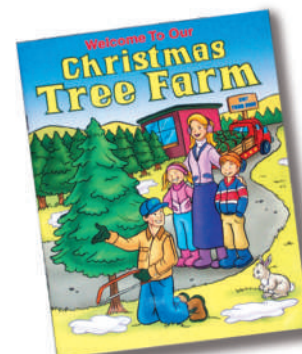
WI CB6002
GA NCB102



WI CB6003
GA NCB103



WI CB6004
GA NCB104



"WELCOME TO OUR CHRISTMAS TREE FARM" COLORING BOOK

Deluxe 32-page coloring book filled with pictures, games, fun facts and information about real Christmas trees. Educate tomorrow's customers today with this wonderful book! Great resale item.

- 96/case
- WI CBD96 GA VCB96
- \$75.60 case

CRAYONS

Mini pack of 4 full-size crayons

- Colors: red, blue, yellow and green
- 144 per case
- CA 12583-PS
- GA 12583
- \$34.56 case



WINTER STATIONERY SET

- Each set includes:
 - 5"x 7-1/4" 8 - pg. paper coloring book
 - Sticker Sheets
 - 4 assorted crayons
- 36 per case
- GA 10981
- \$35.64



FROM TIM MITCHELL'S YULE TREE STAND COMPANY

Rebar Stands, Water Bowls & Drill Machines



REBAR STANDS

- SMALL** Trees up to 4'
- 1/2" Pin with 10" legs and 1/2" rebar
 - 5 per case
 - **CA** 36018-TM
 - **WI** W36018-TM
 - **GA** V36018-TM
 - \$24.75 case

- MEDIUM** Trees up to 8'
- 9/16" Pin with 17" legs and 1/2" rebar
 - 5 per case
 - **CA** 36036-TM
 - **WI** W36036-TM
 - **GA** V36036-TM
 - \$46.00 case

- SUPER MEDIUM** Trees up to 8'
- 9/16" Pin with 17" legs and 5/8" rebar
 - 5 per case
 - **CA** 36036-SM-TM
 - **WI** W36036-SM-TM
 - **GA** V36036-SM-TM
 - \$65.00 case

- LARGE** Trees up to 9'
- 9/16" Pin with 22" legs and 5/8" rebar
 - 5 per case
 - **CA** 36048-TM
 - **WI** W36048-TM
 - **GA** V36048-TM
 - \$70.50 case

WATER BOWLS

Only for small stand



- 1 QT. BOWL**
- 3/8" opening
 - 50/case
 - **CA** 30027
 - **WI** W30027
 - \$72.50 case



- 5 QUART WATER BOWL**
- Recommended for Medium stands
 - 50 per case
 - **CA** 30029-TM
 - **WI** W30029-TM
 - **GA** V30029-TM
 - \$202.50 case

- 10 QUART WATER BOWL**
- Recommended for Super Medium, Large



TABLE TOP STAND KIT

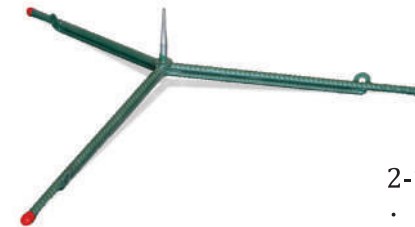
- 5/16" Screw pin stand with 8" legs
- 1 Quart bowl
- 3/8" Red vinyl safety tips
- 5 per case
- **CA** 36016-TM
- **WI** W36016-TM
- **GA** V36016-TM
- \$24.50 case



- REINFORCED LARGE** Trees up to 10'
- 5/8" Pin with 22" doublebar legs and 5/8" and 1/2" rebar

- **CA** 36050-TM
- **WI** W36050-TM
- **GA** V36050-TM

• \$30.55 ea



COMMERCIAL STAND

Trees up to 15'

- 5/8" Bolt stand with 22" legs
- 2.5 Gallon bowl recommended
- **CA** 36049-TM
- **WI** W36049-TM
- **GA** V36049-TM
- \$43.10 ea



- 2-1/2 GALLON BOWL**
- 5/8" grommet
 - For all commercial stands

- **CA** 30031-TM
- **WI** W30031
- **GA** V30031
- \$6.15 ea



PEAK SEASONS
IS THE SOLE
MANUFACTURER
OF TIM MITCHELL
REBAR
STANDS!



#1 SUPER DRILL MACHINE

- A real time saver for busy lots
- Use with baled or unbaled trees
- No need to trim lower branches
- Center trunk with quick release clamps
- Uses standard 110 volt power
- Substantial 3/4 horsepower motor
- Uses a round drill bit

- **CA** 36102-TM-#1
- \$1684.00

DRILL REPLACEMENT MOTOR



- Uses standard 110 volt power
- 3/4 horsepower motor
- **CA** 36100-TM
- \$412.00

#2 DRILL MACHINE

- A busy lot time saver
- For baled or unbaled trees
- No need to trim lower branches
- Center trunk with the easy-positioning cone
- Uses standard 110 volt power
- Substantial 3/4 horsepower motor
- Uses a round drill bit

- **CA** 36102-TM-#2
- \$911.50



QUICK FIT STAND



QUICK-FIT CHRISTMAS TREE STAND

- NEW DESIGN No milling or Drilling Required!
- Fast & Easy
- Screw included
- *No milling needed! The Cambium Layer stays intact, allowing the tree to take in water!*
- Simply use a hand-held drill to attach stand to tree using the screw and rubber grommet provided.
- Be sure screw and grommet are screwed in tight.
- 1.5 qt. Reservoir
- For trees having a trunk diameter of 3"
- 12 per case
- **CA** STD100-K

\$38.40



ARTISAN TREES

Bark Trees

- Extra Small under 10" • # HCTREEXS • \$5.95
- Extra Small under 10" • # HCTREEXS-GA • \$5.95
- Small 10" - 14" • # HCTREESM • \$10.95
- Small 10" - 14" • # HCTREESM-GA • \$10.95
- Medium 14" - 20" • # HCTREEMD • \$19.95
- Medium 14" - 20" • # HCTREEMD-GA • \$19.95
- Large 20" - 30" • # HCTREELG • \$29.95
- Large 20" - 30" • # HCTREELG-GA • \$29.95

3D Cedar Varnished

- Medium 14" - 20" • HCTREEV • \$19.95
- Medium 14" - 20" • HCTREEV-GA • \$19.95



TREE DRILLING EQUIPMENT

TREE DRILLING, STAND AND BOWL SYSTEM

Fast and economical. Allows predrilling of all trees. When trees are ready to be displayed, simply drive the spike stand into the base. Once the customer buys the EZ-UP™ Stand, they will return each year to buy their predrilled tree from you.

EZ-UP™ STANDARD DRILL MACHINE

SAVES TIME AND LABOR!
ELIMINATES WOOD STANDS!

- Constructed of heavy gauge steel
- Fast & easy operation
- Includes sealed motor and a high production round drill bit
- **CA** 36102
- **GA** V36102
- \$911.50



So Easy!

- Drill the tree.
- Attach stand to tree.
- Done.



DRILL MACHINE REPLACEMENT MOTOR

- 3/4 horsepower
- **CA** 36100
- **GA** V36100
- \$412.00

REPLACEMENT BITS & CHUCKS



DRILL BIT
for 9/16"
spike
CA 36204R
GA V36204R
\$29.35



DRILL BIT
for 1/2"
spike
CA 36104R
\$29.35



DRILL BIT
5/8" tapered
CA DB175-CA
GA DB175
\$52.00



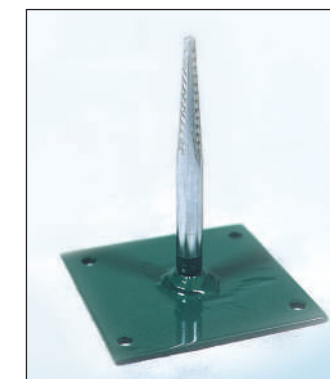
CHUCK For
5/8" tapered
drill bit
CA 36104C-5/8"
\$44.65



CHUCK For
9/16" or 1/2" rounded
drill bit
CA 36104C
GA V36104C
\$44.65

SPIKE PLATE

Screw plate to wood frame
9/16" PIN SIZE
CA 14516-EO
GA V14516-EO
\$47.00 (10 per case)



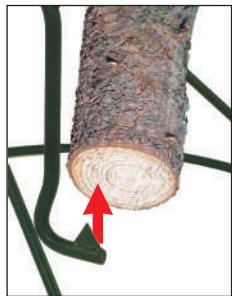
PRO STANDS

What a time saver! Display Christmas trees with the high quality, uniquely designed Pro Tree Stand. In minutes you can give your trees additional weeks of beauty and longevity because of the large water capacity. And in just seconds your tree can be easily straightened for a perfect presentation.

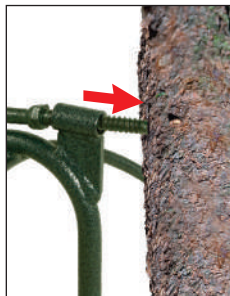
- All steel, forest green powder coated construction
- No sharp edges on the base to gouge floors or snag carpets
- Equal 360° weight distribution for maximum stability
- Made in the USA



The Perfect Tree Stand...as Simple as 1, 2, 3



1. Place stand on tree with the small vertical wedge near center of tree trunk. Hammer in to secure.



2. Start the side screw by tapping/hammering it in and turn the hand crank till flush with tree.



3. To straighten the tree: stand on "low" side, step on the base ring and push the tree away from you.

3'-6' MAX TREE HEIGHT

- Use water bowl 30001 or 14580
- 10/case
- CA PTS-6
- WI WPTS-6
- GA VPTS-6
- \$185.50 case

5'-8' MAX TREE HEIGHT

- Use water bowl 30001 or 14580
- 10/case
- CA PTS-8
- WI WPTS-8
- GA VPTS-8
- \$317.00 case

7'-10' MAX TREE HEIGHT

- Use water bowl 14573
- 5/case
- CA PTS-10
- WI WPTS-10
- GA VPTS-10
- \$193.50 case

8'-12' MAX TREE HEIGHT

- Use water bowl 14573
- 5/case
- CA PTS-12
- WI WPTS-12
- GA VPTS-12
- \$335.00 case

12'-18' MAX TREE HEIGHT

- Use water bowl 30035
- 1/case
- CA PTS-15
- WI WPTS-15
- GA VPTS-15
- \$139.65 ea



CINCO STANDS

CINCO® the trusted name in tree stands, introduces the Push-Pull Express Bolt System that allows for quick set-up and release. The patent-pending button release system saves low branches from needing to be cut off. The improved reservoir makes filling easier.

- Made of heavy duty, no-break plastic
- Rust proof spike secures tree trunk
- Quick-turn plastic bolts and threaded posts
- Easy-fill water reservoir
- Use with fresh or artificial trees
- Made in the USA



TABLE TOP

- Tree trunks to 3"
- For trees up to 4'
- 12 per case
- CA STD163
- WI TS1163
- \$103.80 case

8" DIAMETER

- Holds 1.3 gal.
- Tree trunks to 6"
- For trees up to 8'
- 12 per case
- CA STD152
- WI TS2152
- \$219.00 case



10" DIAMETER

- Holds 2 gal.
- Tree trunks to 7"
- For trees up to 10'
- 8 per case
- CA STD148
- WI TS3148
- \$201.20 case



12" DIAMETER

- Holds 3 gal.
- Tree trunks to 8"
- For trees up to 12'
- 6 per case
- CA STD144
- WI TS4144
- \$204.00 case



CINCO® CLASSIC

With all the same great Cinco benefits, Classic Tree Stands are made of automotive grade polypropylene



TABLE TOP

- Tree trunks to 3"
- For trees up to 4'
- 12 per case
- GA CTS163
- \$103.80 case



SMALL

- Tree trunks to 5½"
- For trees up to 8'
- Holds 1 gal.
- 10 per case
- GA CTS152
- \$176.00 case



MEDIUM

- Tree trunks to 6"
- For trees up to 10'
- Holds 1.75 gal.
- 8 per case
- GA CTS148
- \$194.40 case



LARGE

- Tree trunks to 8"
- For trees up to 12'
- Holds 3 gal.
- 5 per case
- GA CTS144
- \$163.25 case

ADVANTAGE

- Tree trunks to 6"
- For trees up to 8'
- Holds 1.3 gal.
- 12 per case
- GA CTS150
- \$160.80 case



REBAR STANDS & WATER BOWLS

From Table Top size on up Peak Seasons offers Rebar Stands and Water Bowls to fit any tree. Helps keep any tree straight, fresh and beautiful. Bowls are listed with corresponding stands.

TABLE TOP



- 1qt. bowl included
- Comes with 3 vinyl rebar tips
- 5/case
- CA** 36016
- WI** W36016 · \$24.50 case
- GA** V36016

SMALL

TREES UP TO 4'

1/2" SPIKE

- 5/case
- CA** 36018
- WI** W36018
- \$24.75 case

9/16" EASY-OUT SPIKE

- 5/case
- CA** 36019
- GA** V36019
- \$26.00 case



- 1 QT. BOWL
- 3/8" opening
- 50/case
- CA** 30027
- WI** W30027
- \$72.50 case

MEDIUM

TREES UP TO 8'

1/2" SPIKE

- 5/case
- CA** 36035
- \$39.25 case



- 6.5 QT. BOWL
- 1/2" grommet
- 50/case
- CA** 30026S
- \$202.50 case

HEAVY DUTY

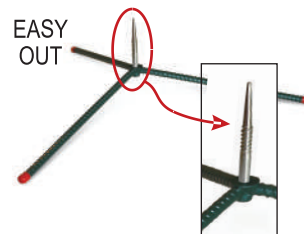
- 5/8" legs
- Easy-Out 9/16" spike
- CA** 36036HD
- 5/case
- \$60.25 case



- 6.5 QT. BOWL
- 9/16" grommet
- 50/case
- CA** 30026
- WI** W30026
- GA** V30026
- \$202.50 case

EASY OUT

- 9/16" spike
- 5/case
- CA** 36036EO
- WI** W36036
- GA** V36036
- \$41.25 case



- 5 QT. BOWL
- 9/16" grommet
- 50/case
- CA** 30029
- GA** V30029
- \$202.50 case

INTERCHANGEABLE

LARGE

TREES UP TO 8'

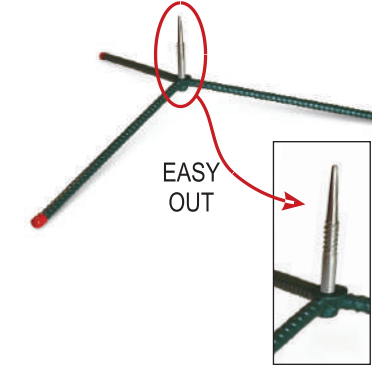
1/2" SPIKE

- 5/case
- CA** 36047
- \$60.25 case



EASY OUT

- 9/16" spike
- 5/case
- CA** 36048EO
- WI** W36048
- GA** V36048
- \$65.75 case

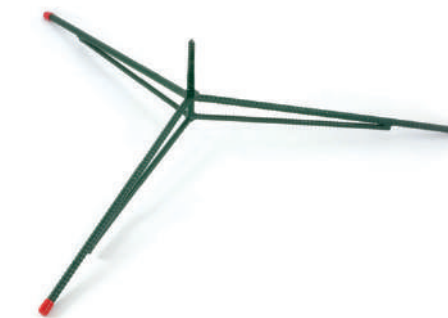


COMMERCIAL

TREES UP TO 10'

5/8" BOLT

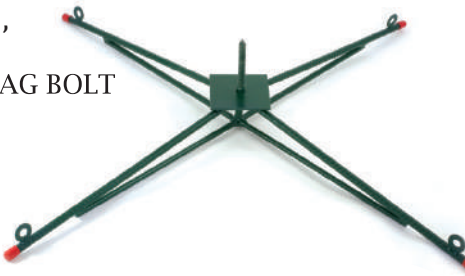
- CA** 36050-B
- WI** W36050
- GA** V36050
- \$29.60 ea



TREES UP TO 15'

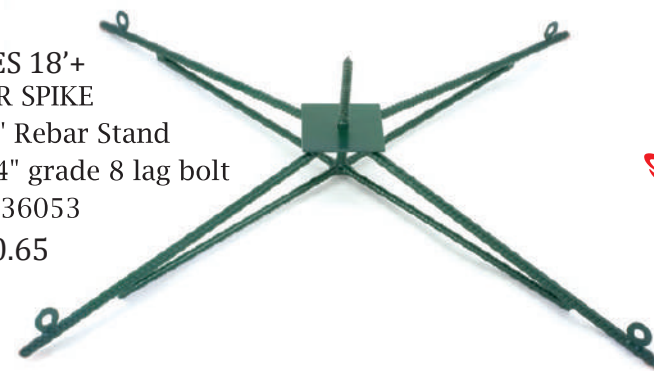
5/8" GRADE 8 LAG BOLT

- CA** 36049
- WI** W36049
- GA** V36049
- \$43.10 ea



TREES 18'+
SUPER SPIKE

- 60" Rebar Stand
- 3/4" grade 8 lag bolt
- CA** 36053
- \$90.65



6.5 QT. BOWL

- 1/2" grommet
- 50/case
- CA** 30026S
- \$202.50 case



2-1/2 GALLON BOWL

- 9/16" grommet
- 25/case
- CA** 14564
- WI** W14564
- GA** V14564
- \$153.75 case



2-1/2 GALLON BOWL

- 5/8" grommet
- For all commercial stands
- CA** 30031
- WI** W30031
- GA** V30031
- \$6.15 ea



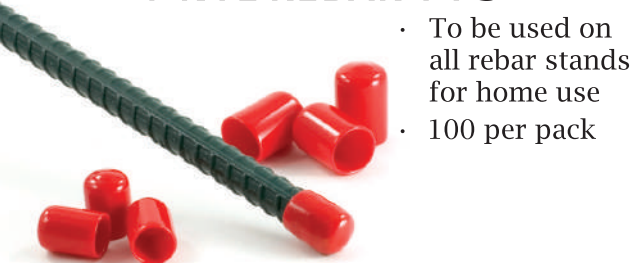
Our biggest Christmas tree bowl ever!

6-1/2 GALLON BOWL

- 5/8" grommet
- 18" diameter
- 7" deep
- CA** 30034
- GA** V30034
- \$13.50 ea

REBAR STAND ACCESSORIES

VINYL REBAR TIPS



- To be used on all rebar stands for home use
- 100 per pack

HEAVY DUTY REBAR TIPS

- Our "beefier" rebar tip for all rebar stands
- 100 per pack

FOR 1/2" REBAR

CA 36110

WI W36110

GA V36110

\$50.00 pack

FOR 5/8" REBAR

CA 36111

WI W36111

GA V36111

\$58.00 pack



GROMMETS

- 100 per pack

1/2"

CA 36103

GA V36103

\$50.00 pk

9/16"

CA 36105

GA V36105

\$50.00 pk

5/8"

CA 36106

GA V36106

\$60.00 pk

1/2"

- Fits small and medium stands

CA 36108

WI W36108

GA V36108

• \$28.00 pack

5/8"

- Fits large and commercial stands

CA 36109

WI W36109

GA V36109

• \$32.00 pack

TREE BRACES

Fast, Easy, Straight & Solid!

POWER TREE BRACE Patent Pending

Designed by Carl Powers of Noble Valley Farms exclusively at Peak Seasons. Carl, who runs a tree lot in Las Vegas, endorses the Power Tree Brace as the best in the market.

- Made of 1/2" Rebar
- Four tree braces per pack (all hardware included)
- Can be used with:
 - 3-legged commercial stand (No. 36050) or
 - 4-legged commercial stand (No. 36049)
- 4/pack
- CA 36052
- \$25.80 pack



STANDS

Shipped from Georgia

HOLIDAY TRADITIONS STANDS

STANDS FOR EXTRA STABILITY!

- Durable and easy-to-use
- 5 T-nut tipped eye-bolts thread through steel nuts for strength
- Additional center spike secures tree trunk
- No-drip edge prevents spilling
- Use with fresh or artificial trees
- Made in the USA



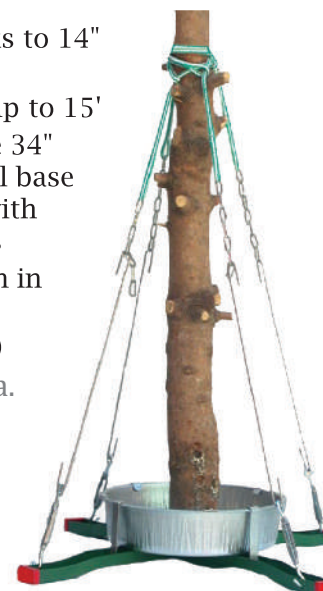
Limited Quantity

20" BASE

- Tree trunks to 5.5" diameter
- For trees up to 8'
- 0.75 gallon capacity
- 12 per case
- GA 95508
- \$170.40 case

4 BRACE EVER FRESH COMMERCIAL STANDS

- Tree trunks to 14" diameter
- For trees up to 15'
- Extra large 34" heavy steel base and legs with 4 guy rods
- Anchor pin in center
- GA NPS020
- \$228.20 ea.



- For trees up to 20'
- Extra large 7' heavy steel base and legs with 4 guy rods
- Anchor pin in center
- 7.5 gallon capacity
- GA NPS025
- FOB: Milbridge, ME
- Not available in Stockbridge
- DROP SHIP ONLY
- \$431.75



NAIL-ON WATER BOWLS

Worry-Free Nail-On Bowls

- Patented plastic formulation that aids in self-sealing around nail holes
- No worry about leakage
- Padded bowls add extra protection

1 QUART WATER BOWL

- For tabletop trees
- 8" diameter
- 50/case
- CA** 14500
- GA** V14500
- \$72.50 case



4 QUART WATER BOWL

- For trees up to 7 feet
- 10" diameter
- 50/case
- CA** 30001
- \$115.00 case



5 QUART WATER BOWL

- For trees up to 8 feet
- 12" diameter
- 50/case
- CA** 14580
- GA** V14580
- \$125.00 case



5 QUART WATER BOWL WITH PAD

- 50/case
- CA** 14585
- \$175.00 case



6" PAD

- Adhesive back
- 25/pack
- CA** M145852-1
- \$15.00 pack



2.5 GALLON WATER BOWL

- For trees over 8 feet
- With rubber pad
- 14" diameter
- 25/case
- CA** 14573
- GA** V14573
- \$158.75 case

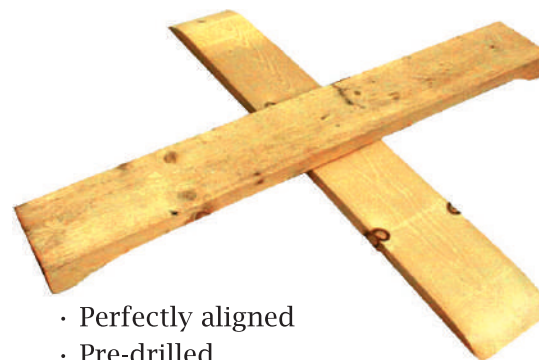
COMMERCIAL JUMBO 6.5 GALLON WATER BOWL

- Our biggest Christmas tree bowl ever!
- For trees up to 18 feet
 - 18" diameter
 - With rubber pad
 - CA** 30035
 - GA** V30035
 - \$13.50 ea



WOOD STANDS & ACCESSORIES

WOOD STANDS



- Perfectly aligned
- Pre-drilled
- Precision cut



- 15" 1x2 • 20/bdl • for <2' trees
CA 31512 \$20.00 bdl
- 18" 2x3 • 20/bdl • for 2'-3' trees
CA 31823 \$41.00 bdl
- 30" 2x3 • 20/bdl • for 3'-4' trees
CA 33023 62.00 bdl
- 24" 2x4 • 10/bdl • for 3'-5' trees
CA 32424 \$30.50 bdl
- 30" 2x4 • 10/bdl • for 4'-6' trees
CA 33024 \$37.00 bdl
- 36" 2x4 • 10/bdl • for 5'-7' trees
CA 33624 \$42.00 bdl
- 48" 2x4 • 10/bdl • for 6'-8' trees
CA 34824 \$62.50 bdl
- 24" 2x4 • 10/bdl • for 5'-7' trees
GA WS2424 \$52.60 bdl
- 30" 2x4 • 10/bdl • for 4'-6' trees
GA WS3024 \$61.70 bdl
- 36" 2x4 • 10/bdl • for 5'-7' trees
GA WS3624 \$70.00 bdl
- 48" 2x4 • 4/bdl • for 6'-8' trees
GA WS4824 \$40.68 bdl



WOOD TREE BRACES

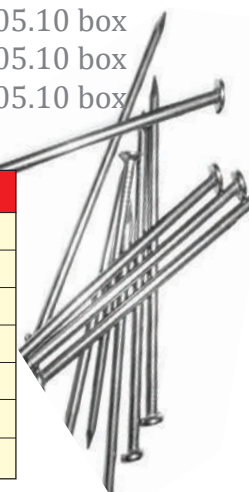
- 50 per bundle
- 1" x 1" x 12"
GA WSB012
\$29.00 bdl
- 1" x 2" x 16"
CA 31202
\$52.50 bdl
- 1" x 2" x 18"
CA 31203
\$52.50 bdl
- 1" x 2" x 24"
CA 31204
\$62.50 bdl

NAILS

- 50 lb. box
- 8D NAILS **CA** 31208 • \$90.75 box
- 16D NAILS **CA** 31216 • \$101.10 box
- 20D NAILS **CA** 31220 • \$101.10 box
- 30D NAILS **CA** 31230 • \$105.10 box
- 40D NAILS **CA** 31240 • \$105.10 box
- 50D NAILS **CA** 31250 • \$105.10 box
- 60D NAILS **CA** 31260 • \$105.10 box

SIZE CHART

NAIL	GAUGE	LENGTH
8D	10	2.5"
16D	8	3.5"
20D	6	4.0"
30D	5	4.5"
40D	4	5.0"
50D	4	5.5"
60D	4	6.0"



CLEATED WOOD STANDS

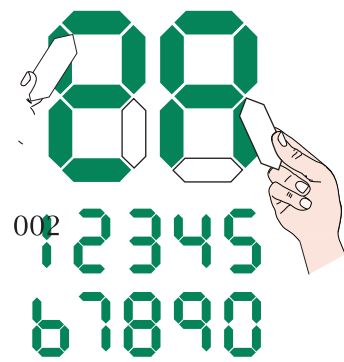
- 48" 2x4 • 2/bundle
CA 34824C
\$41.30 bdl
- 48" 2x6 • 1/bundle
CA 34826C
\$27.75 ea
- 60" 2x6 • 1/bundle
CA 36026C
\$30.30 ea

CUSTOM SIGNS

Heavy Duty yet Simple!

Do-it-yourself price and direction signs you can customize to set your own prices, directions and hours. Just cover the preprinted signs with the vinyl stickers included.

- Made of heavy-duty styrene
- Weatherproof-adheres in the worst weather!
- Each unit comes with a set of labels or arrows
- Arrows can be placed in any direction



**REPLACEMENT
PRICE DECALS**

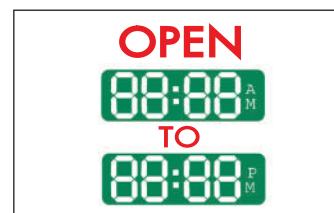
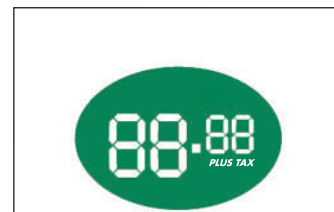
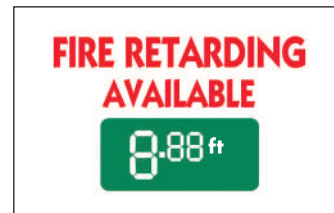
- Green
- CA 60098
- WI W60098
- \$1.55

SNOW FLOCKING
CA 60086

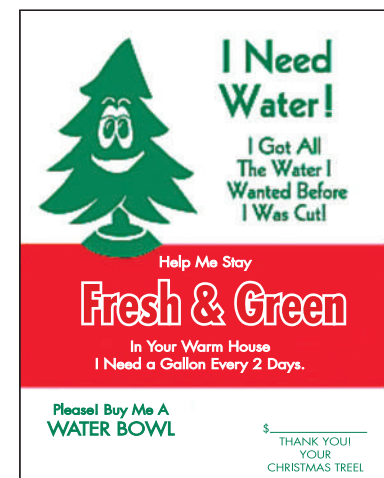
**FIRE RETARDING
AVAILABLE**
CA 60087
(WRITE IN)
CA 60090

OPEN
CA 60089
WI W60089

- 22"W x 14"H
- \$11.40



LOT SIGNS



CA 60076
GA V60076
• 22"W x 28"H
• \$17.25

DIRECTIONAL SIGNS

- Made of thick, corrugated plastic
- Attachable red arrow can be placed to point any direction

**REPLACEMENT
RED ARROWS**

CA 60099
WI W60099

- \$2.90

ENTRANCE
CA 60085
GA V60085
WI W60085

EXIT
CA 60084
WI W60084

PARKING
CA 60091
WI W60091

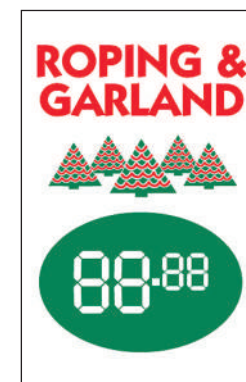
- 22"Wx14"H
- \$11.40



22"W x 28"H, these bold tree signs are sure to catch the eye of purchasers who know what kind of tree they want!

• \$17.25

NOBLE FIR	CA 60060	WI W60060
GRAND FIR	CA 60061	WI W60061
FRASER FIR	CA 60062	WI W60062
DOUGLAS FIR	CA 60063	WI W60063
BALSAM FIR	CA 60064	WI W60064
SCOTCH PINE	CA 60065	WI W60065
WHITE PINE	CA 60066	WI W60066
BLUE SPRUCE	CA 60067	WI W60067



14"W x 22"H
CA 60093
WI W60093
\$11.40



• 14"W x 22"H
CA 60094
WI W60094
• \$11.40



• 14"W x 22"H
CA 60096
WI W60096
• \$11.40



**FRESH CUT
TREES**

- 22"W x 28"H
- CA 60075
- WI W60075
- \$17.25



• 22"W x 14"H
CA 60083
GA V60083
WI W60083
\$11.40



• 14"W x 22"H
CA 60092
GA V60092
WI W60092
• \$11.40



• 22"W x 28"H
CA 60073
GA V60073
• \$17.25

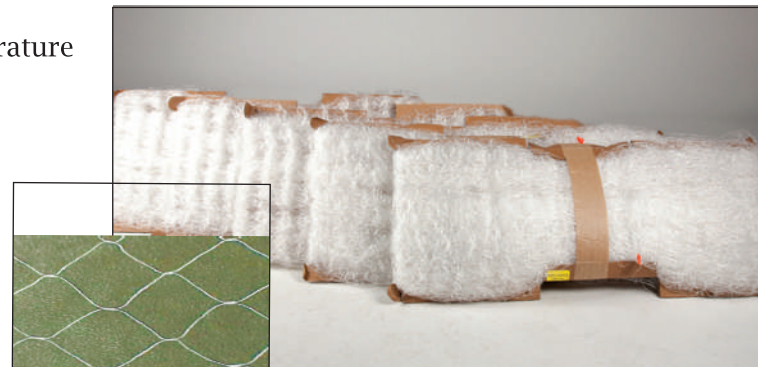


CHRISTMAS TREE NETTING

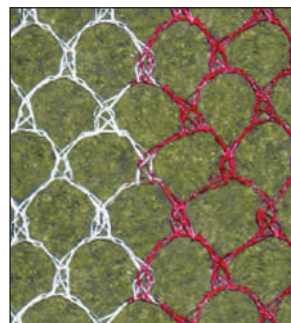
- Made in North America of recycled material
- Engineered to remain soft and pliant in any temperature
- Will not tear, come apart or zipper

WHITE EXTRUDED NETTING

- A 3500' case of net will bale approximately 350 trees
- 2" diamond mesh
- 3500' per case



16"	18"	20"	23"	26"
GA KBN716	WI WNET718	CA NET720	CA NET723	CA NET726
• \$174.25 case	GA KBN718 • \$195.75 case	WI WNET720 GA KBN720 • \$190.00 case	WI WNET723 GA KBN723 • \$191.50 case	WI WNET726 GA KBN726 • \$212.50 case



1040' CROSS TOWN CANDY CANE NETTING CARTRIDGE

- Made of super-strong knitted polyethylene
- A 1040' cartridge of net will bale approximately 100 trees
- 1.5" diamond mesh
- 3 cartridges per case

16"	18"	20"	23"	26"
WI NCT21016	WI NCT21018	CA 60220	CA 60223	CA 60225
• \$97.40	GA CT1018 • \$108.65	WI NCT21020 GA CT1020 • \$153.90	WI NCT21023 GA CT1023 • \$165.00	WI NCT21026 GA CT1026 • \$195.00

DETERMINE NETTING SIZE REQUIRED

Measure the back side of the baler at the widest point where the trunk of the tree exits the baler



***Go to www.peakseasons.store "ABOUT US" tab for instructional video*

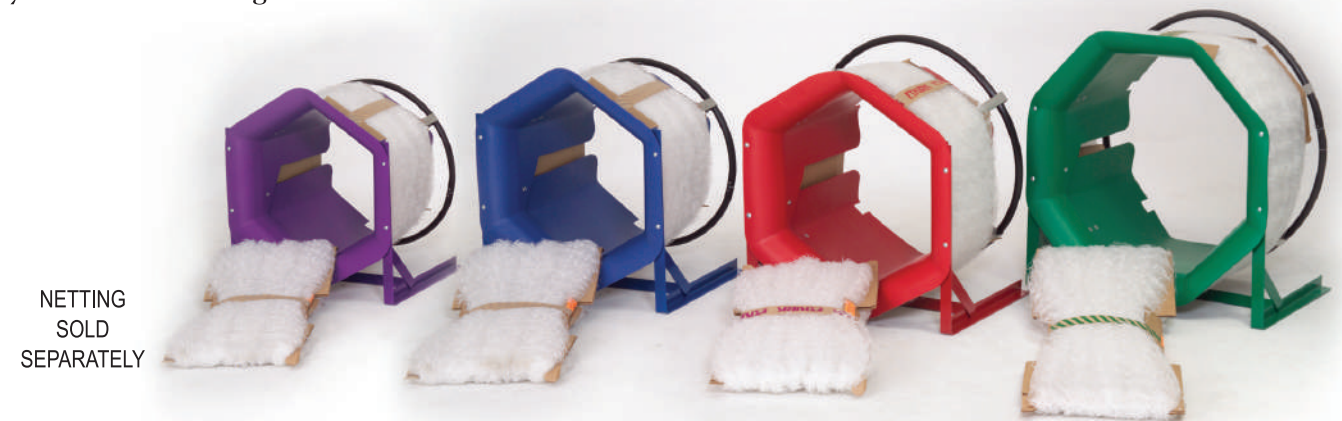


KIRK BALERS

- Proven to endure years of use through extreme climates and conditions
- 89% of customers expect their purchased Christmas tree to be baled
- Simplifies customer handling
- Makes for quick & easy loading
- Secures branches during transport reducing possible damage
- Colored to indicate funnel size allowing you to quickly identify the size of netting needed.

Kirk Balers feature:

- A heavy gauge all steel frame
- Polyethylene funnel that is durable and lightweight
- Slick finish that minimizes friction allowing trees to slide through quickly and easily
- A hinged flap to ease loading of netting



BALERS

18" TABLE TOP HAND BALER	20" TABLE TOP HAND BALER	23" TABLE TOP HAND BALER	26" TABLE TOP HAND BALER
• Up to 6' trees	• Up to 8' trees	• 8' - 10' trees	• Up to 12' trees
• Purple	• Blue	• Red	• Green
WI KB0018	CA 60203	CA 60205	CA 60206
GA KHB018	WI KB0020	WI KB0023	WI KB0026
• \$349.45	GA KHB020	GA KHB023	GA KHB026
	• \$350.00	• \$360.00	• \$430.00

BALER STAND

- An easy alternative support for your Baler during the baling process.
- Made from 1½ inch angle iron
- Stand features scissor folding legs for easy storage
- Predrilled to easily attach the balers

METAL STAND FOR 18", 20" & 23" BALER

- GA** KMS001
- \$181.65
- ADAPTOR FOR 26" BALER
- GA** KMS002
- \$63.75



RETARDER RINGS

- Replacement rings
- 20" **GA** KBR020
- \$14.25
- 23" **GA** KBR023
- \$14.25
- 26" **GA** KBR026
- \$14.25



FLAGGING TAPES

SUPERIOR FLAGGING TAPES

There's no messing around with these tapes! Texas grade solid flagging tape is the most durable, long-lasting outdoor flagging available. Perfect for marking tree tops, specify species, price trees by color, mark boundaries, landscaping areas and so much more!



NUMBERED FLAGGING TAPE

- Made of heavy-duty, fade resistant 2ml solid color plastic
- 250 flags (14" x 1-3/16") per roll
- Descending numbers 250 - 1
- WI** NFT14-RED
- WI** NFT14-YELLOW
- WI** NFT14-GREEN
- WI** NFT14-PINK
- WI** NFT14-WHITE
- WI** NFT14-ORANGE
- WI** NFT14-BLUE
- \$3.40 roll



SOLID COLOR FLAGGING TAPE

- 1-3/16" x 100 yards
- Taffeta embossed vinyl
- BLUE **WI** FTREG-BLUE
GA PFE101
- PURPLE **WI** FTREG-PURPLE
GA PFE103
- ORANGE **WI** FTREG-ORANGE
GA PFE104
- RED **WI** FTREG-RED
GA PFE106
- WHITE **WI** FTREG-WHITE
GA PFE107
- YELLOW **WI** FTREG-YELLOW
GA PFE108
- GREEN **WI** FTREG-GREEN
- PINK **WI** FTREG-PINK
- \$2.97 roll

DOTTED FLAGGING TAPE

- 1-3/16"W x approx. 100 yards
- BLUE ON WHITE **WI** FTDT-B/W
- RED ON WHITE **WI** FTDT-R/W
- \$3.40 roll



STRIPED FLAGGING TAPE

- 1-3/16" x 150 feet
- Taffeta embossed vinyl
- BLUE/WHITE **GA** PFE201
WI FTST-B/W
- ORANGE/WHITE **GA** PFE204
WI FTST-O/W
- RED/WHITE **GA** PFE206
WI FTST-R/W
- YELLOW/WHITE **GA** PFE208
- YELLOW/BLACK **GA** PFE218
- \$4.87 roll



'SOLD' FLAGGING TAPE

- 100 pre-printed SOLD tags per roll
- 1-3/16" x 14" each tag
- Perforated for easy separation
- CA** FTSOLD-CA
- WI** FTSOLD
- GA** VFTSOLD
- \$3.45 roll

GLO VIBRANT COLOR FLAGGING TAPE

- 1-3/16" x 50 yards
- Taffeta embossed vinyl
- \$2.97 roll



- BLUE-GLO **WI** FTGLO-BLUE
GA PFE301
- LIME-GLO **WI** FTGLO-GREEN
GA PFE302
- PINK-GLO **WI** FTGLO-PINK
GA PFE305
- YELLOW-GLO **WI** FTGLO-YELLOW
- ORANGE-GLO **WI** FTGLO-ORANGE
GA PFE304

GLO VIBRANT COLOR NUMBERED FLAGGING TAPE

- 1-3/16" x 50 yards
- \$3.40 roll



- PINK **WI** FTNGLO-PINK
- ORANGE **WI** FTNGLO-ORANGE
- BLUE **WI** FTNGLO-BLUE

GLO DOTTED FLAGGING TAPE

- 1-3/16" x 50 yards
- BLACK ON ORANGE **WI** FTDTG-OB
- BLACK ON PINK **WI** FTDTG-PB
- \$3.40 roll



GLO STRIPED FLAGGING TAPE

- BLACK & PINK **WI** FTSTG-P/B
- BLACK & ORANGE **WI** FTSTG-O/B
- \$4.87 roll



WREATH RINGS

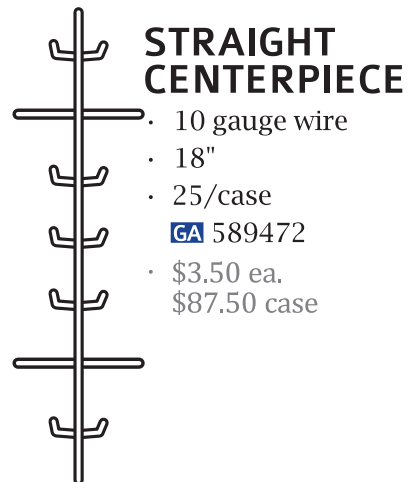


6" RING <ul style="list-style-type: none"> • 10 gauge wire • 6 clips • 100/case GA 580062 • \$.57 ea. \$57.00 case 	8" RING <ul style="list-style-type: none"> • 10 gauge wire • 8 clips • 100/case GA 580082 • \$.70 ea. \$70.00 case 	10" RING <ul style="list-style-type: none"> • 10 gauge wire • 10 clips • 100/case WI CWR10 GA 580102 • \$.79 ea. \$79.00 case 	12" RING <ul style="list-style-type: none"> • 10 gauge wire • 12 clips • 100/case WI CWR12 GA 580122 • \$.94 ea. \$94.00 case
--	--	---	---

14" RING <ul style="list-style-type: none"> • 9 gauge wire • 14 clips • 50/case WI CWR14 GA 580142 • \$1.15 ea. \$57.50 case 	16" RING <ul style="list-style-type: none"> • 8 gauge wire • 16 clips • 50/case WI CWR16 GA 580162 • \$1.40 ea. \$70.00 case 	18" RING <ul style="list-style-type: none"> • 7 gauge wire • 18 clips • 50/case WI CWR18 GA 580182 • \$1.85 ea. \$92.50 case 	20" RING <ul style="list-style-type: none"> • 6 gauge wire • 20 clips • 50/case WI CWR20 GA 580202 • \$2.05 ea. \$102.50 case
--	--	--	---

24" RING <ul style="list-style-type: none"> • 6 gauge wire • 24 clips • 50/case WI CWR24 GA 580242 • \$2.50 ea. \$125.00 case 	30" RING <ul style="list-style-type: none"> • 2 gauge wire • 30 clips • 25/case WI CWR30 GA 580302 • \$6.10 ea. \$152.50 case 	36" RING * <ul style="list-style-type: none"> • 0 gauge wire • 36 clips • 15/case WI CWR36 GA 580362 • \$9.75 ea. \$146.25 case 	48" RING ** <ul style="list-style-type: none"> • 00 gauge wire • 48 clips • 10/case GA 580480 • \$15.50 ea. \$155.00 case
---	---	---	---

*Oversized Shipping
**Freight Line Only



STRAIGHT CENTERPIECE

- 10 gauge wire
- 18"
- 25/case
- GA** 589472
- \$3.50 ea.
- \$87.50 case



DOOR SWAG

- 8" (3-clamp)
- 50/case
- WI** CWRSWAG
- GA** 589312
- \$.80 ea.
- \$40.00 case

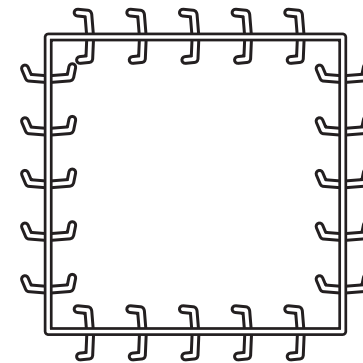
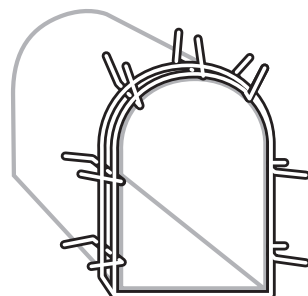


HORIZONTAL SWAG

- 12" (5-clamp)
- 25/case
- GA** 589482
- \$.99 ea.
- \$24.75 case

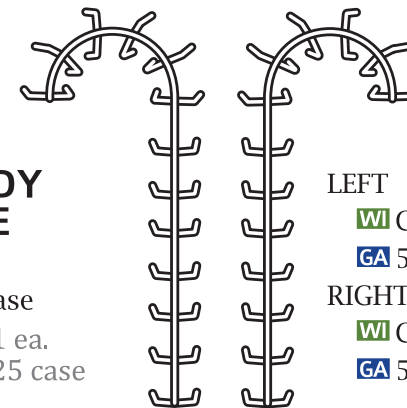
MAILBOX

- Painted green
- 25/case
- WI** CWRBOX
- GA** 589442
- \$3.85 ea.
- \$96.25 case



SQUARE WREATH FRAME

10" FRAME <ul style="list-style-type: none"> • 10 gauge wire • 25/case GA 589772 • \$3.00 ea. \$75.00 case 	18" FRAME <ul style="list-style-type: none"> • 7 gauge wire • 25/case GA 589782 • \$4.30 ea. \$107.50 case
---	---

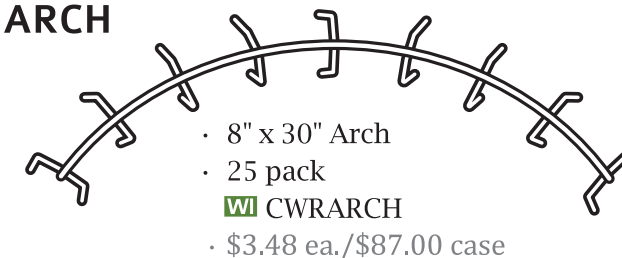


CANDY CANE

- 24"
- 25/case
- \$3.21 ea.
- \$80.25 case

- LEFT
WI CWRLCC
GA 589132
- RIGHT
WI CWRGCC
GA 589142

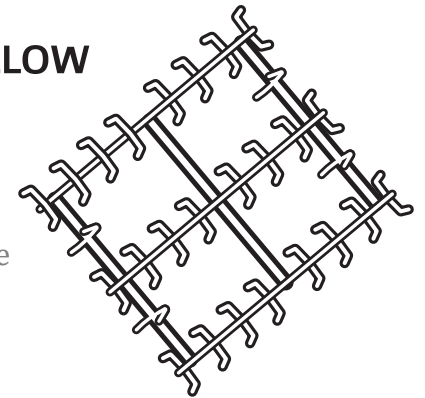
ARCH



- 8" x 30" Arch
- 25 pack
- WI** CWRARCH
- \$3.48 ea./\$87.00 case

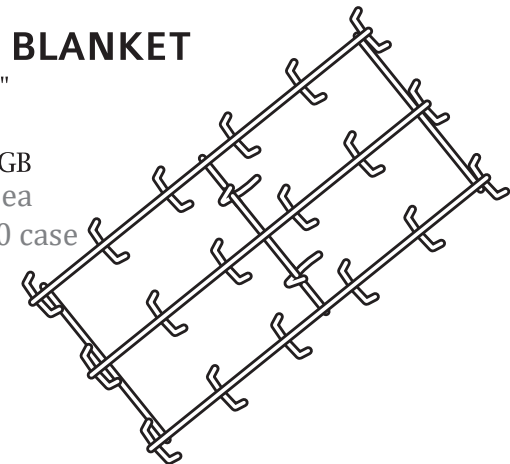
GRAVE PILLOW

- 18" x 24"
- 25/case
- GA** 589692
- \$11.60 ea.
- \$290.00 case



GRAVE BLANKET

- 18" x 36"
- 25/case
- WI** CWRGB
- \$10.80 ea.
- \$270.00 case

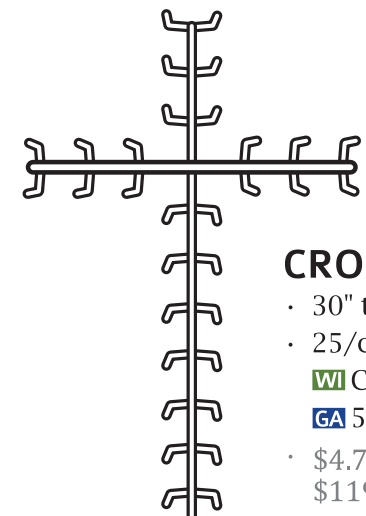


Help keep it simple



WREATH KIT

- Easy and fast decorations for fresh wreaths
- Includes a Holiday Bow, 3 Flocked Pinecones and 3 Grapeberry Picks
- 12 per case
- CA** WP42000
- WI** WP42000-WI
- GA** VWP42000
- \$3.99 ea.
- \$47.88 case



CROSS

- 30" tall
- 25/case
- WI** CWRXCROSS
- GA** 589102
- \$4.78 ea.
- \$119.50 case

PEAK SEASONS' BOWS AND EMBELLISHMENTS ARE AN EXCELLENT WAY TO ENHANCE ANY WREATH
SEE PAGES 54-59

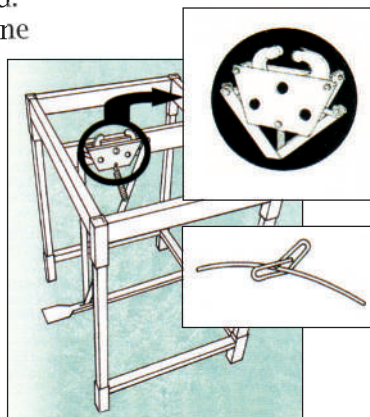
WREATH & FLORAL SUPPLIES

For Fabulous Fresh or Dried Wreaths

"NO HAMMER" WREATH CLAMP MACHINE

Eliminate any need for hammering clamps closed. The Mitchell "No-Hammer" Wreath Clamp Machine flattens and closes ring wires in one easy step. Designed with heavy-duty components for high-volume wreath production, it features adjustable jaws of hardened steel.

- Note: periodic cleaning and lubricating of the jaws required to keep the machine in good working order
 - Foot pedal activation
 - Metal stand sold separately
- WI WCM01
GA 589400
• \$219.75 ea.



METAL STAND

Wreath Clamp bolts easily into the Metal Stand.

- Durable, rust resistant powder coat paint finish
 - Easy to disassemble
 - Stand: 30"W x 24"D x 36"H
 - Includes a 31" x 46" aluminum top (not pictured)
- WI WCM02
GA 589760
• \$505.00 ea



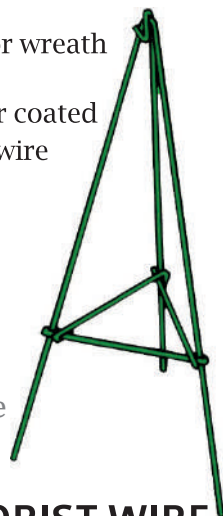
CAROLINA GARLAND MACHINE

Make beautiful garlands or roping!

- Manually-operated
 - Provides constant, uniform tension
 - Uses Garland Wire No. 542400 and Black Twine No. TW481
- GA CGM101
• \$425.00 ea.

EASEL

- Sturdy rest for wreath display
- Green powder coated
- Heavy gauge wire
- Locking back brace
- 30" tall
- 25/case
- \$4.50 ea.
- \$112.50 case



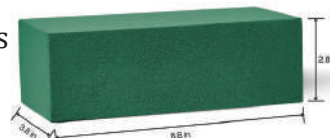
GIANT SUCTION CUP WREATH HOLDER

- Great for windows and glass doors
 - Holds in hot and cold extremes
 - Holds up to 10 pounds
 - 12/case
 - \$2.60 ea./\$31.20 case
- GA 57503

FOLIAGE FRESH FLORAL FOAM

This wet foam is so easy to work with - soaks up water quickly, holds stems securely in place and can be cut to any size to suit any floral design project.

- 2.8x3.8x8.8 (2pk)
- Each 2 pack shrink wrapped for retail
- Twelve 2 packs
- \$42.00/cs



MAX TAPENER & SUPPLIES *Shipped from Georgia*



- Redesigned tying machine model HT-R and HT-R2
- Lightweight, durable, easy to use and easy to maintain
- Plated for corrosion resistance in the elements
- Saves time and provides a secure plant tie
- Squeeze the handle to stretch tape between the jaws, and you are ready to wrap around a stem. A second squeeze staples and cuts off the tape

MAX TAPENER TAPE MAGAZINE

- GA MAX103
• \$92.35 ea.
- GA MAX104
• \$95.75 ea.

MAX TAPENER STAPLES

- 4800 staples/box
- GA MTS101 • \$5.30 per box

MAX TAPENER CUTTER BLADES

- 2 blade pack
- GA MTB002 for the HT-R and HT-R2
• \$9.60 per pack

TIE TAPES FOR MAX TAPENER HT-R

HEAVY DUTY

- .008 mil, .5" x 60', green
- GA MTE182 • \$1.95 ea

MAX TAPE

- .006 mil, .5" x 87', blue
- GA MTE161 • \$3.15 ea



VINYL DOT GLOVES

- White cotton with vinyl dots
- GA VDG102 • Ladies
- GA VDG103 • Men's Large
- \$1.90 per pair

TIE TAPES FOR MAX TAPENER HT-R2

EMBOSSED

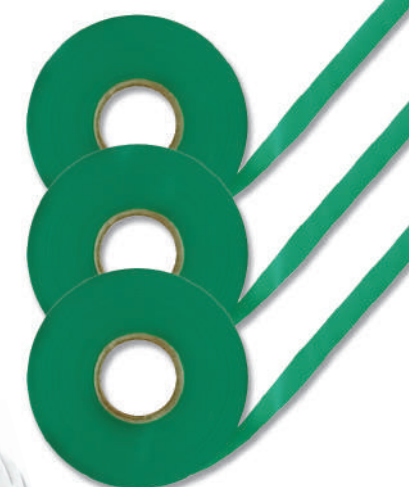
- .007 mil, .5" x 170', green
- GA MTE372 • \$2.35 ea.

HEAVY DUTY

- .008 mil, .5" x 150', green
- GA MTE382 • \$2.35 ea.

HEAVY DUTY EMBOSSED

- .009 mil, .5" x 140', white
- GA MTE397 • \$2.35 ea.



ATLAS NITRITE PALM GLOVES

- Great for handling greens, gardening and crafts
- Seamless nylon knit for comfort and cleanliness
- Nitrile palm provides grip as well as oil and abrasion resistance
- Open weave back allows hands to breathe
- \$5.35/pair

WHITE

- Small
- GA 370S
- Medium
- GA 370M
- Large
- GA 370L
- X-Large
- GA 370XL

BLACK

- Medium
- GA 370MB
- Large
- GA 370LB
- X-Large
- GA 370XB



WREATH & GARLAND WIRE

- Green painted florist wire
- .5 lb. plastic spool
- 20 GAUGE, 155' spool
- WI W542000
- GA 542000
- \$4.45 ea.
- 24 GAUGE, 354' spool
- WI W542400
- GA 542400
- \$5.25 ea.

BLACK GARLAND TWINE

- 1890'/roll
- 65# tensile strength
- GA TW481
- 18.60 ea



FLORIST WIRE

- Green 18" wire
- 24 gauge
- 12 lb. box, approximately 5640 pieces
- WI W502418
- GA 502418
- \$47.75 box



RIBBONS

WATERPROOF VELVET RIBBON



- 100% waterproof
- High quality
- Poly-backed
- 100 yards per roll
- #40 · \$33.00 roll
- 2-5/8" wide
- RED [WI](#) RV100RED
- BURGUNDY [WI](#) RV100BUR
- #9 · \$21.00 roll
- 1-5/8" wide
- RED [WI](#) RV100RED-9

RED PLASTIC RIBBON



- 100% waterproof
- High quality
- Easy to tie
- #40
- 2-5/8" wide
- 50 yards per roll
- [CA](#) RP2740955-CA
- [GA](#) RP2740955-GA
- [WI](#) RP2740955
- \$6.10 roll



RIBBON WIDTHS

- #5 · 7/8"
- #9 · 1 5/8 - 1 3/8"
- #40 · 2 1/4" - 2 5/8"
- #100 · 4"

VELVET RIBBON BY THE ROLL

- Flocked velvet front on poly-satin backing
- Waterproof for outdoor use

RED VELVET

- Size #9 · 25 yds [GA](#) VRC906 · \$5.80
- Size #9 · 100 yds [GA](#) VRC916 · \$21.00
- Size #40 · 25 yds [GA](#) V4013 · \$8.50
- Size #40 · 100 yds [GA](#) VRC416 · \$33.00
- Size #100 · 25 yds [GA](#) VRC106 · \$17.00

BURGUNDY VELVET

- Size #40 · 25 yds [GA](#) V4094 · \$9.95
- Size #40 · 100 yds [GA](#) VRC411 · \$33.00

SCARLET VELVET

- Size #9 · 25 yds [GA](#) VRC919 · \$7.25
- Size #40 · 25 yds [GA](#) VRC419 · \$8.50
- Size #40 · 100 yds [GA](#) VRC119 · \$33.00

WHITE VELVET

- Size #40 · 25 yds [GA](#) V4001 · \$8.40

PURPLE VELVET

- Size #40 · 25 yds [GA](#) V4044 · \$9.40

BEAUTIFUL, WEATHER-RESISTANT WIRED RIBBONS

- Add a touch of class to any decorations with our #40 Wired ribbons



WIRED PINEYS

- 25 yards per roll
- [GA](#) 413874
- [WI](#) RW41387
- \$22.95 roll



CREAM WHITNEY VINTAGE TRUCK

- 25 yards per roll
- [WI](#) RW226486
- \$24.50 roll



NATURAL SNOWY TREES

- #40 · 25 yards per roll
- [WI](#) RW350384
- [GA](#) 350384
- \$13.75 roll



CHRISTMAS GNOMES

- 25 yards per roll
- [WI](#) RW396641
- [GA](#) 396641
- \$18.95 roll



STREEP GNOMES IN TRUCK

- 25 yards per roll
- [WI](#) RW227383
- [GA](#) 227383
- \$23.75 roll



TATTERSAL PLAID

- #40 Wired
- Red, green, gold
- 25 yards per roll
- [GA](#) 439980
- \$19.75 roll



POINSETTIA WITH HOLLY & PINE CONE

- 50 yards per roll
- [WI](#) RW395477
- [GA](#) 395477
- \$21.75 roll



GLINTON

- 50 yards per roll
- Red/White
- [GA](#) 174522
- \$15.50 roll



#40 CHRISTMAS PLAID WITH WOVEN EDGES

- 50 yards per roll
- [WI](#) RW224478
- \$15.50 roll



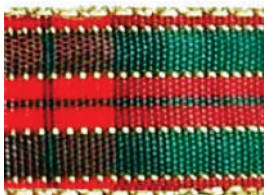
BETHANY GOLD SWIRLS

- 50 yards per roll
- [WI](#) RW228515
- [GA](#) 228515
- \$16.25 roll



VELVET WITH WIRED EDGE

- 50 yards per roll
- [GA](#) 533210 Gold edge
- [GA](#) 548146 Red Edge
- \$17.50 roll



MODERN PLAID RED & GREEN

- 50 yards per roll
- [GA](#) MODPLD
- \$13.95 roll



CHIMNEY NATURAL SANTA BOOT

- #40 Wired
- 50 yards per roll
- [WI](#) RW440665
- [GA](#) 440665
- \$22.25 roll



YUMMY PEPPERMINT GINGERBREAD

- #40 Wired
- 50 yards per roll
- [WI](#) RW440726
- [GA](#) 440726
- \$24.00 roll



TROVE SNOWFLAKE

- #40 Wired
- 50 yards per roll
- [WI](#) RW311538
- [GA](#) 311538
- \$17.30 roll



DELMORE Red & Gold REVERSIBLE

- 50 yards per roll
- [GA](#) 427598
- \$25.75 roll

LOTS OF BOWS

The Perfect Size for Decorating Wreaths!

Each bow has 6 wide loops plus a center loop with a diameter of 9" and generous 14" tails. Made of #40 (2-5/8" wide) ribbon, they are all pre-wired and ready to embellish the finest wreaths.

WIRED TRADITIONAL PLAID

- Weather resistant
- 24/case
- WI BWPFS24
- \$3.85 ea.
- \$92.40 case



WIRED SATIN CANDY STRIPED

- 12/case
- WI BWCCS12
- GA HBCCS12
- \$4.25 ea.
- \$51.00 case



WIRED GLITTERED SWIRLS

- Weather resistant
- 12/case
- WI BWGOLD12
- \$3.90 ea.
- \$46.80 case



WIRED ANTIQUE SILVER

- Weather resistant
- 12/case
- WI BWASIL12
- \$3.90 ea.
- \$46.80 case



WIRED COUNTRY PLAID

- 12/case
- WI BWCP12
- GA HBGP12
- \$4.50 ea.
- \$54.00 case



WIRED BLACK & RED FUZZY CHECKERED

- 12/case
- WI BWBR12
- \$5.50 ea.
- \$66.00 case



#40 EXTRA LARGE RED VELVET

- Weatherproof
- 10 loops plus center loop
- 12" diameter
- 25" tail
- 12/case
- WI BRXLG12
- GA VBRXLG12
- \$5.85 ea.
- \$70.20 case



VALUE BOWS

- Tied with gold braided wire
- 72/case
- BURGUNDY
- WI BVEBUR72
- RED
- WI BVERED72
- \$2.15 ea./\$154.80 case



#40 VELVET

- Weatherproof
- 24/case
- RED
- WI BRED24
- GA VBRED24
- BURGUNDY
- WI BBUR24
- GA VBBUR24
- \$3.60 ea.
- \$86.40 case



BULK CASE

- 60 per case
- RED
- GA HBQ406
- BURGUNDY
- GA HBQ410
- \$3.50 ea./\$210.00 case



#40 ECONOMY VELVET BOWS

- Weatherproof
- 4 loops with 8" diameter
- 12" tail

DELUXE BOW

- Floral look with center loop
- 24/case
- WI BVEDLXR24
- GA VBVEDLXR24
- \$2.35 ea.
- \$56.40 case



#9 MINIS

- Weatherproof
- 6 loops with 6" diameter, 7" tall
- 24/case
- RED VELVET
- WI BVMINI24
- PLAID
- WI BVPLMINI24
- \$2.10 ea.
- \$50.40 case
- \$2.20 ea.
- \$52.80 case



#40 RED VELVET PULL BOW

- 8" bow dia.
- 24 per case
- GA PBC498
- \$3.55 ea./\$85.20



#9 RED VELVET PULL BOW

- 5 1/2" bow dia.
- 24 per case
- GA PBC998
- \$1.60 ea./\$38.40 cs



#9 PLAID PULL BOW

- 5.5" bow dia.
- 24 per case
- GA PBC955
- \$1.10 ea./\$26.40 cs



#9 HANDMADE RED VELVET

- 6" bow dia.
- 8 loops
- 24 per case
- GA HBC906
- \$2.60 ea.
- \$62.40 cs



#40 HANDMADE RED VELVET

- 10" bow dia.
- 8 loops, 17" tails
- 40 per case
- GA 400848
- \$4.15 ea.
- \$166.00 cs



#40 PLAID BOW

- Acetate ribbon
- Waterproof
- 8" bow diameter
- Metallic tartan
- 12 per case
- GA HBMP12
- \$4.35 ea.
- \$52.20 case



SUPER-SIZE HANDMADE

- 42-INCH OVERALL
- 4" wide ribbon
- 15" bow diameter
- 10 loops, 35" tails
- 4 per case
- GA HBS106
- \$10.65 ea./\$42.60 case



- 72-INCH OVERALL (6 ft)
- 6" wide ribbon
- 24" bow diameter
- 10 loops, 60" tails
- 2 per case
- GA GBV600
- \$26.90 ea./\$53.80 cs

- 96-INCH OVERALL (8 ft)
- 8" wide ribbon
- 30" bow diameter
- 10 loops, 72" tails
- GA GBV800
- \$45.50 ea.



E-Z BOW LARGE

- Ribbon width 1-3/8"
- Bow diameter 5-1/2"
- 24 per case
- CA 40001
- WI W40001
- \$1.90 ea.
- \$45.60 case

#40 VELVET SWAG HANDMADE BOW

- 8 1/2" bow dia.
- Weatherproof
- 9 per case
- GA 40890
- \$4.60 ea.
- \$41.40 case



E-Z BOW JUMBO

- Ribbon width 2-1/2"
- Bow diameter 8"
- 24 per case
- CA 40002
- WI W40002
- \$3.35 ea.
- \$80.40 case



WREATH EMBELLISHMENTS

LOBLOLLY PINECONES

Average 3-4"



NATURAL
• 100/case
GA 234046
• \$25.00 box



WHITE TIPPED
PONDEROSA
WI PC78615
GA 78615
\$49.50 case



NATURAL
PONDEROSA
3-5" average
100/case
WI PC78603
GA 78603
\$34.50 case



JUMBO
NATURAL
PINECONE
• 4" on a pick
• 12/case
WI WP17017
GA 17017
• \$.96
\$11.52 case

SNOW TIPPED CONES

100/case
WI PCC89133
GA VPCC89133
\$50.00 case



CONES WITH SILVER GLITTER

Glittered tips
and edges
100/case
WI PCC89130
GA VPCC89130
• \$50.00 case



TRIPLE CONE CLUSTER

• 24/case
WI WP17011
GA 17011
• \$.73
\$17.52 case



FROSTED TRIPLE CONES

• Pinecones are 1.5" to 2"
• Approx. 8" with pick
• 50 box
GA 4216
• \$56.25



2" WHITE TIPPED CONE PICK

• 24 box
GA 17013
• \$.34/\$8.16 box



PINE CONE BANDS

• 1000/case
WI PCBAND
• \$80.00 case



18" WINTER BERRY SPRAYS



GOLD
• 24 stems per pack
GAN14376G
• \$25.20 pack



RED
• 24 stems per pack
GAN14376R
• \$25.20 pack



PEARL WHITE
• 24 stems per pack
GAN14376P
• \$32.50 pack



SILVER
• 12 stems per pack
GA14376S
• \$12.60 pack



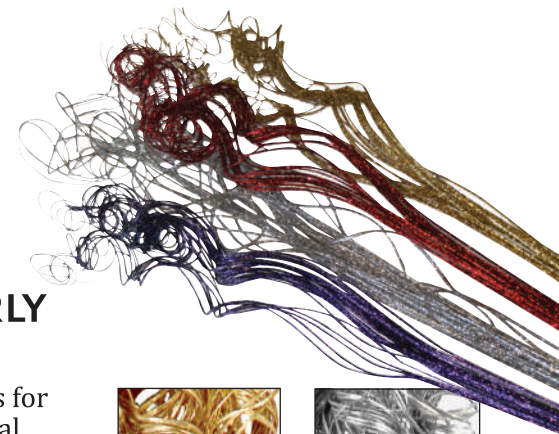
BURGUNDY
• 12 stems per pack
GA14376B
• \$12.60 pack



DARK RED BERRIES
8" stem
12 berries per stem
24 stems per pack
GARBB001
\$14.40/pack

GLITTER CURLY TING TING

• Attractive accents for centerpieces, floral displays and wreaths
• Natural curly ting coated with glitter
• Approximately 32"
• 75 stems per bunch
\$6.75



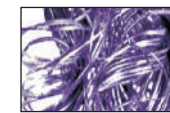
GOLD
GA 751



SILVER
GA 751S



RED
GA 751R



PURPLE
GA 751P

3" SNOWMAN PICK

• 2 assorted snowmen
• 6/pack
WI WP7163
GA 7163
• \$1.35 ea./\$8.10 pack



BOW PICKS

• Fabric bows on a metal pick
• Flat packed for easy storage
• Medium 4 loop bow
6.5" wide x 7" tails
• 25 per bag
• \$1.35 each/\$33.75 per bag

RED VELVET
WI W416301
GA 416301

RED/BLACK PLAID
WI W416264
GA 416264



WREATH EMBELLISHMENTS

HOLLYBERRIES

- Beautiful berries on 2.5" wire
- 72 stems, 2 berries per stem
- 144 berries/box

RED
• 9-10mm
WI HB54001
GA 2801RW

• \$2.95 box

WHITE PEARL
• 8-9mm
WI HB54002
GA 2801P

• \$2.95 box

BURGUNDY
• 7-8mm
WI HB54003
GA 2801BW

• \$2.95 box

GOLD
• 9-10mm
WI HB54004
GA 2801GW

• \$4.25 box

SILVER
• 9-10mm
WI HB54005
GA 2801SW

• \$4.25 box

10mm PICKED HOLLY BERRIES

- 12 berries per 3" pick
- 12 picks per pack
- \$8.00 pack

RED **GA** 13685R
BURGUNDY **GA** 13685B
GOLD **GA** 13685G

25mm PICKED BERRIES

- 3 berries on 3" pick
- 12 picks per pack

RED **GA** 13684R
BURGUNDY **GA** 13684B

• \$8.25 pack

BURGUNDY BERRY

- 20mm
GA 49200B
- \$12.45 box
- 25mm
GA 49300B
- \$15.95 box

16mm HOLLY BERRIES

- 2 berries per stem
- 72 stems per pack
- \$3.70 pack

GOLD **GA** 2803G
SILVER **GA** 2803S
BURGUNDY **GA** 2803B
PEARL WHITE **GA** 2803W
LIGHT BURGUNDY **GA** 2803LB

RED BERRIES

- Individual deep red berries on 3" wire
- 144/box

12mm
WI WRB0012
GA 13994
\$7.50 box

18mm
Dark Red Berry
GA D49200R

\$12.25 box
20mm
WI WRB0020
GA 49200R
\$12.45 box
25mm
WI WRB0025
GA 49300R
\$15.95 box

MULTI GIFT BOX PICK

- Weatherproof
- 12/pack
WI WP17258
GA 17258
- \$.90 ea./\$10.80 pack

HOLLY & PINE PICK WITH BLUE BALL, GLITTERED APPLE & CONE

- Weatherproof
- 12/pack
WI WP17850
- \$1.30 ea./\$15.60 pack

WHITE TIPPED CONES & PINE WITH RED BERRIES

- 12/pack
GA 17856
WI WP17856
- \$1.20/\$14.40 box

SMALL WHITE TIPPED CONES W/ BERRIES

- 12/pack
GA 17846
WI WP17846
- \$1.20 ea./\$14.40 pack

HOLLY PICK WITH DARK RED BERRIES & SMALL CONES

- 12/pack
WI WP17341
GA 17341
- \$1.10/\$13.20 box

1" GLITTERED GIFT BOX PICK

- 4 assorted boxes
- 12/pack
WI WP12986
GA 12986
- \$.40 ea./\$4.80 pack

FROSTED APPLE RED & GOLD BERRIES

12/pack
GA 17872
WI WP17872
\$1.45 ea./\$17.40 pack

RED GLITTERED BERRIES

12/pack
GA 17300
WI WP17300
\$.80 ea./\$9.60 pack

PINECONE PICK WITH BERRIES & CINNAMON STICK

12/pack
GA 17986
WI WP17986
\$1.20/\$14.40 BOX

GRAPE BERRY PICK

- 12/pack
WI WP37139
GA 37139
- \$6.00 box

GROWER SUPPLIES

Shipped from Georgia

FELCO® - Simply the Best Pruners in the World with awesome cutting power and precision control

- Swiss-made hardened cutting blades and anvil blade for smooth, tight action
- Rubber cushion and shock absorber provide smooth operation and soft closings--quality you can feel
- Solid-forged metal alloy handles for incredibly durable pruners

FELCO #2

- The original Felco
- 8.5" overall
- 8.5 oz.
- [GA](#) FP102
- \$72.85 ea.



FELCO #6

- For smaller hands
- 7.25" overall
- 7.5 oz.
- [GA](#) FP106
- \$67.50 ea.



FELCO #12

- Rotating cutting blade handle
- 7.25" overall
- 9 oz.
- [GA](#) FP112
- \$88.67 ea.



REPLACEMENT BLADE

Felco 2, 4, 11, 400

- [GA](#) FRB002
- \$19.00 ea.

REPAIR KIT

Felco 2, 6, 7, 8, 11, 12, 13, 19, 50, 51

- [GA](#) FRK002
- \$7.05 ea.

REPLACEMENT SPRING 2-pack

2, 4, 7, 8, 10, 11

- [GA](#) FRS002
- \$5.60 ea.

REPLACEMENT BLADE

Felco 6, 12

- [GA](#) FRB006
- \$16.40 ea.

REPLACEMENT SPRING 2-pack

Felco 6, 12

- [GA](#) FRS006
- \$5.60 ea.

8" ZENPORT FORGED BYPASS PRUNER

- Professional pruner
- Cushion grip
- 1" cut
- [GA](#) Z290
- \$15.75 ea.



8" HEAVY DUTY ANVIL PRUNER

- Die cast steel
- [GA](#) Z203 • \$18.00 ea.



EURO-PRO HORTICULTURAL PRUNER

- 3/4" cutting capacity
- Ergonomic grips
- 7.75" overall
- [GA](#) Q19 • \$14.70 ea.



HIGH-GRADE HOLSTERS

- With belt clip

[GA](#) F910
• \$13.65 ea.



[GA](#) F912
• \$10.98 ea.



BAHCO BOW SAW

- Standard tooth, pointed-nose saw
- 21" blade
- [GA](#) SBS101
- \$23.25 ea.



REPLACEMENT BLADES



STANDARD TOOTH
REPLACEMENT BLADE
Dry Wood

[GA](#) RSB101 • \$8.50 ea.



RAKER TOOTH
REPLACEMENT BLADE
Green Wood

[GA](#) RSB102 • \$8.50 ea.
[WI](#) BSB11002

21" ERGO BOW SAW

You'll be hard pressed to find a better bow saw! Made to last--this lightweight and heavy-duty saw is built for ergonomic comfort and safety.

- Rust and corrosion resistant surface
- Ergonomic handle and knuckle protector
- Raker tooth blades for fast and easy cutting
- Tension lever for quick blade replacement
- Saw and Blades are made in Sweden



SAW

- 5/cs

[WI](#) BS11001

[GA](#) VBS11001

\$116.25

BAMBOO STAKES

NATURAL CANE STAKES

- Approx. 3-times the strength of same size wood stake
- No knots, wood grains or weak points to break or splinter
- Flexible, smaller diameter stake will aid caliper growth
- FOB Florida



DIA	LGTH	QTY	ITEM No.	PRICE
5/16"	2'	1000	FL CBS201	• \$88.15 bdl.
3/8"	2.5"	500	FL CBS252	• \$75.40 bdl.
3/8"	3'	500	FL CBS302	• \$91.15 bdl.
3/8"	4'	500	FL CBS402	• \$124.50 bdl.
3/8"	5'	500	FL CBS502	• \$150.00 bdl.
7/16"	4'	250	FL CBS410	• \$80.75 bdl.
5/8"	5'	100	FL CBS505	• \$60.95 bdl.
5/8"	7'	100	FL CBS705	• \$89.00 bdl.
1/2"	3'	250	FL CBS304	• \$64.25 bdl.
1/2"	4'	250	FL CBS404	• \$95.25 bdl.
1/2"	5'	250	FL CBS504	• \$121.50 bdl.
1/2"	6'	200	FL CBS604	• \$112.50 bdl.
1/2"	7'	100	FL CBS704	• \$64.80 bdl.
3/4"	6'	100	FL CBS606	• \$97.15 bdl.
3/4"	7'	100	FL CBS706	• \$114.30 bdl.
3/4"	8'	50	FL CBS806	• \$66.50 bdl.
7/8"	8'	50	FL CBS807	• \$79.00 bdl.
1"	8'	50	FL CBS808	• \$88.50 bdl.